

**JOHNSTONE**

**A·U·C·T·I·O·N M·A·R·T**

# 54th Annual

## Last Chance All-Breeds BULL SALE

Johnstone Auction Mart, Moose Jaw  
Tuesday, May 26, 2026 12:00 Noon

### 106 Registered Bulls -Yearlings and 2yr olds

18 Simmental (10 - 2yr old, 8 yearling)  
18 Red Angus (4 - 2yr olds, 14 yearlings)  
29 Black Angus (1 - 2yr old, 28 yearlings)  
13 Charolais (2 - 2yr olds, 11 yearlings)  
14 Hereford (5 - 2yr olds, 9 yearlings)  
14 Gelbvieh (3 - 2yr old, 11 yearlings)

**START TIME: 12:00 Noon**

**Live Online Bidding with DLMS.ca**

Auctioneer: Scott Johnstone..... 306-631-0767  
Ring staff: Corey Mantell..... 306-631-1888  
Darwin Rosso ..... 306-690-8916  
Consultant / Blockman: Glen Gabel.....306-536-1927  
Consultant / Order Buyer: Darwin Rosso.....306-690-8916

Conducted & Managed by:

**Johnstone Auction Mart Ltd.**

Box 818, Moose Jaw SK S6H 4P5

PL#914447 DL#111625

Phone: 306-693-4715

Fax: 306-691-6650

[www.johnstoneauction.ca](http://www.johnstoneauction.ca)

# Sale Staff

Contact any of our staff below for confidential assistance for buying your bull, and/or order buying for you if you cannot come to the sale or bid online May 26.



Scott Johnstone,  
Auctioneer  
306-631-0767



Corey Mantell  
Barn Boss  
Ringman  
306-631-1888



Darwin Rosso  
Consultant  
Order Buyer  
Ringman  
306-690-8916



Glen Gabel  
Consultant  
Order Buyer  
Blockman  
306-536-1937

This catalogue is online with **COLOUR** pictures at [www.johnstoneauction.ca](http://www.johnstoneauction.ca)

**Breed Order / Index**

|             |        |        |        |         |
|-------------|--------|--------|--------|---------|
| Simmental   | - (18) | - Lots | 1-18   | Page 5  |
| Red Angus   | - (18) | - Lots | 19-36  | Page 9  |
| Black Angus | - (29) | - Lots | 37-65  | Page 13 |
| Charolais   | - (13) | - Lots | 66-78  | Page 17 |
| Hereford    | - (14) | - Lots | 79-92  | Page 20 |
| Gelbvieh    | - (14) | - Lots | 93-106 | Page 22 |

EPDs are tools to predict traits of an animal based on genetic traits based on their pedigree. Accuracy varies and, EPDs **CAN NOT BE COMPARED BETWEEN BREEDS**—only within a breed. Below are the current average EPDs for the breeds:

|             |      |     |       |
|-------------|------|-----|-------|
| Simmental   | +3.4 | +79 | +114  |
| Charolais   | +0.3 | +61 | +112  |
| Black Angus | +2.0 | +56 | +99   |
| Red Angus   | +1.3 | +44 | +75   |
| Hereford    | +2.5 | +57 | +90.4 |
| Gelbvieh    | +0.1 | +70 | +104  |
|             |      |     |       |

**Bull Data Legend**  
**(EPDs are in brackets)**  
 BD = Birth Date  
 BW = Birth Weight  
 WW = Weaning Weight  
 YW = Yearling Weight  
 \*WW & YW may be actual or adjusted

**To bid live online**, register with [dlms.ca](http://dlms.ca) and get approved as a bidder, then follow along with the sale to bid on the bulls. If you have any technical issues registering, being approved, or inquiries on how to bid, contact Mark Shologan at 1-780-699-5082



\*You can come to pay and pick up your bull right after you buy, later in the day, or the next day. Please contact us after you buy to tell us your timing on payment and pickup.

| <b>BREED ORDER, Consignor Index</b> | <b>Lots</b>                          |
|-------------------------------------|--------------------------------------|
| <b><u>SIMMENTAL—Page 5</u></b>      |                                      |
| Deer Range Farms .....              | 1,2                                  |
| Flying TL Simmentals.....           | 3,4,5                                |
| Flying D Ranch.....                 | 6                                    |
| Prairie View Simmentals .....       | 7,8,9,10                             |
| C & E Stephens Farms .....          | 11,12,13,14                          |
| Wood Creek Ranch.....               | 15,16,17,18                          |
| <b><u>RED ANGUS—Page 9</u></b>      |                                      |
| DKF Angus .....                     | 19,20,21                             |
| Deer Range Farms.....               | 22,23                                |
| Deep Lake Livestock.....            | 24                                   |
| Layne & Megan Giofu .....           | 25                                   |
| Malinowski Cattke Company .....     | 26,27,28,29                          |
| LX Angus .....                      | 30,31                                |
| LV Farms.....                       | 32,33,34,35                          |
| Rosso Angus.....                    | 36                                   |
| <b><u>BLACK ANGUS—Page 13</u></b>   |                                      |
| Deep Lake Livestock.....            | 37,38,39,40                          |
| Gold-Bar Livestock .....            | 41                                   |
| Hi Low Angus.....                   | 42,43,44,45                          |
| Irving Angus.....                   | 46,47,48,49,50,51,52,53,54,55,56,57  |
| Sylvestre Land & Cattle .....       | 58,59,60,61                          |
| Wagner Angus.....                   | 62,63,64                             |
| Rosso Angus .....                   | 65                                   |
| <b><u>CHAROLAIS—Page 17</u></b>     |                                      |
| Bar H Charolais.....                | 66,67,68,69,70,71,72,73              |
| DRD Charolais.....                  | 74                                   |
| Shiels Cattle Company.....          | 75,76                                |
| Rosso Charolais .....               | 77,78                                |
| <b><u>HEREFORD—Page 20</u></b>      |                                      |
| Blair-Athol Farms .....             | 79,80,81,82,83,84                    |
| Charlton Farms.....                 | 85,86                                |
| LV Farms.....                       | 87,88                                |
| Rocking G Land & Cattle.....        | 89,90,91,92                          |
| <b><u>GELBVIEH—Page 22</u></b>      |                                      |
| Diamond Acre Farms.....             | 93,94,95,96                          |
| GPK Gelbvieh.....                   | 97,98,99,100,101,102,103,104,105,106 |

**All bulls are semen tested!**

**The day sheet will show scrotal measurements and dates tested.  
It will be available online at dlms.ca and johnstoneauction.ca  
the evening before the sale.**

**Any submitted videos on the bulls will be listed with Youtube links on the Last Chance web page on our website!**

# SIMMENTAL


Deer Range Farms, Stewart Valley SK

Lots 1-2

Travis Olson 306-741-9275 deer.range.farms@gmail.com

|  |                             |         |           |            |
|--|-----------------------------|---------|-----------|------------|
| <b>1</b>   | <b>DEER RANGE EPIC 875M</b> | 1495885 | <b>BD</b> | 01/02/2024 |
|  | BAV 875M                    | Red     | <b>BW</b> | 74(+2.3)   |
| WS ALL ABOARD B80<br>WS MAJESTIC Z133<br>GRINALTA'S HP SENSATION FF909D<br>BLACKSAND BRAVA 37Z |                             |         | <b>WW</b> | 884(92)    |
| WS EPIC E152<br>DEER RANGE BRAVA 5K  |                             |         | <b>YW</b> | (141)      |

Sired by the AI sire, Epic, who calves easily, but this calf really grew as well. He's from a long, blazed-faced cow with a great udder.



|  |                                  |         |           |            |
|--|----------------------------------|---------|-----------|------------|
| <b>2</b>   | <b>DEER RANGE GUERRILLA 837M</b> | 1495867 | <b>BD</b> | 06/06/2024 |
|  | BAV 837M                         | Red     | <b>BW</b> | 85(+1.7)   |
| FGAF GUERRERO 810Y<br>DEER RANGE COWGIRL 881H<br>CROSSROAD RADIUM 789U<br>GJED ASHLEY 5A |                                  |         | <b>WW</b> | 624(61)    |
| DEER RANGE GUERRILLA 883K<br>DEER RANGE RADIANCE 876C                                    |                                  |         | <b>YW</b> | (74)       |

Just a June calf, this guy is going to mature into a correct, moderate bull. He's got calving ease genetics on both sides of the pedigree and would make some great crossbred replacements.

## Flying TL Simmentals, Earl Grey SK

Lots 3-5

Terry & Loretta Young 306-725-8280 tlyoung@sasktel.net

|   |                            |         |           |            |
|---|----------------------------|---------|-----------|------------|
| <b>3</b>  | <b>YOUNG MR MALONE 70M</b> | 1468592 | <b>BD</b> | 11/04/2024 |
|   | YTL 70M                    | Red     | <b>BW</b> | 92(+3.6)   |
| SPRINGCREEK LINER 56U<br>SPRINGCREEK TARA 111R<br>BJL MR RANGO 21B<br>BJL MISS ELIZABETH 113A |                            |         | <b>WW</b> | 851(85)    |
| SPRINGCREEK BLUE CHIP 9D<br>YOUNGS ME DRU 95D   |                            |         | <b>YW</b> | (116)      |

Scurred - A very solid built dark red stout made Blue Chip son. Lots of hair with the bonus baldie face. Excellent ADJ weaning weight of 851lbs. Will sire heavy weight calves with the bonus money stripe.



|          |                            |                           |           |            |
|----------|----------------------------|---------------------------|-----------|------------|
| <b>4</b> | <b>YOUNG MR MCCOY 102M</b> | 1468623                   | <b>BD</b> | 14/04/2024 |
|          | YTL 102M                   | Red                       | <b>BW</b> | 85(+0.7)   |
|          | SPRINGCREEK BLUE CHIP 9D   | SPRINGCREEK LINER 56U     | <b>WW</b> | 852(86)    |
|          | SPRINGCREEK TARA 111R      | SPRINGCREEK TARA 111R     | <b>YW</b> | (125)      |
|          | YOUNG MS COKKIE 238C       | PHEASANTDALE WINCHEST 47A |           |            |
|          |                            | BJL MISS 99A              |           |            |

Homo Polled - Another really good Blue Chip son. A long deep sided bull with a very moderate 85 pound birth weight with lots of performance as he weaned off his dam at 852 pounds.



|          |                              |                      |           |            |
|----------|------------------------------|----------------------|-----------|------------|
| <b>5</b> | <b>YOUNG MR MULVANE 159M</b> | 1472345              | <b>BD</b> | 02/05/2024 |
|          | YTL 159M                     | Red                  | <b>BW</b> | 82(+1.4)   |
|          | NUG LANDMARK 310G            | WS BEEF KING W107    | <b>WW</b> | 709(74)    |
|          | MUIRHEADS CARLOS 109F        | MISS CAMDEN 53E      | <b>YW</b> | (101)      |
|          |                              | IPU RESOLVE 114D     |           |            |
|          |                              | MUIRHEADS CARLOS 43W |           |            |

Hetro Polled - A dark red, very sound structurally made bull. Deep sided, good hip with great muscle expression all with very useful 82lb BW. A bull that would work great for second calvers or to add some calving ease to your cow heard.

**Flying D Ranch, Crane Valley SK** **Lot 6**  
 Brandon & Marcy Duncan 306-690-3565 duncanmarcy@gmail.com

|          |                      |                           |           |      |
|----------|----------------------|---------------------------|-----------|------|
| <b>6</b> | <b>FLYING D 148N</b> | 2382900                   | <b>BD</b> | 2025 |
|          | DKF 72M              |                           | <b>BW</b> | 106  |
|          | KT BETTS 1328        | RED DKF DISTINGUISHED 16D | <b>WW</b> |      |
|          | DEER RANGE MISS 834F | SVS BLK JENNA 736E        | <b>YW</b> |      |
|          |                      | KUNTZ MARSHALL 12Y        |           |      |
|          |                      | ?                         |           |      |

**Prairie View Simmentals, Stalwart SK** **Lots 7-10**  
 Clifford Nelson 306-535-2475 cjnelson@sasktel.net

|          |                        |                        |           |            |
|----------|------------------------|------------------------|-----------|------------|
| <b>7</b> | <b>PVSS NORMAN 18N</b> | 1550849                | <b>BD</b> | 24/01/2025 |
|          | PVSS 18N               | Red                    | <b>BW</b> | 96(+2.5)   |
|          | R PLUS 2039K           | CMS SOCHI 307A         | <b>WW</b> | 819(79)    |
|          | PVSS NANCY 16C         | MISS R PLUS 0020H      | <b>YW</b> | 1184(111)  |
|          |                        | KN ANCHOR "T" METRO 4E |           |            |
|          |                        | PVSS NANCY 9N          |           |            |

Twin, polled, dark red, blaze face bull out of our hard working full fleck fullblood 16C cow. 18N was our heaviest weaning calf in 2025 at 962 lbs, no creep. Full sisters have beautiful udders and plenty of milk.



|                     |                           |                                  |                      |
|---------------------|---------------------------|----------------------------------|----------------------|
| <b>8</b>            | <b>PVSS NASH 23N</b>      | 1550865                          | <b>BD</b> 25/01/2025 |
|                     | PVSS 23N                  | Red                              | <b>BW</b> 100(+2.0)  |
| R PLUS 2039K        | CMS SOCHI 307A            | Polled                           | <b>WW</b> 758(78)    |
| PVSS TEMPTATION 15F | MISS R PLUS 0020H         | Polled & solid                   | <b>YW</b> 1172(111)  |
|                     | SUNNY VALLEY IDENTITY 40C | Red. Mother is a daughter of 1C. |                      |
|                     | PVSS TEMPTATION 1C        |                                  |                      |



Lot 8



Lot 9

|                     |                          |         |                      |
|---------------------|--------------------------|---------|----------------------|
| <b>9</b>            | <b>PVSS NITRO 32N</b>    | 1550878 | <b>BD</b> 04/02/2025 |
|                     | PVSS TEMPTATION 12J      | Red     | <b>BW</b> 87(+1.0)   |
| R PLUS 2039K        | CMS SOCHI 307A           |         | <b>WW</b> (80)       |
| PVSS TEMPTATION 12J | MISS R PLUS 0020H        |         | <b>YW</b> (118)      |
|                     | SWAN LAKE JAIL BREAK 98E |         |                      |
|                     | PVSS TEMPTATION 1C       |         |                      |

Polled, solid Red, square hipped, smooth made. Lower set bull with EPDs above average in all but 1 category. His Dam, daughter of 1C, raised the high selling Simm bull at last year's sale—beautiful udder!

|                    |                      |         |                      |
|--------------------|----------------------|---------|----------------------|
| <b>10</b>          | <b>PVSS NOVA 34N</b> | 1550858 | <b>BD</b> 11/02/2025 |
|                    | PVSS TEMPTATION 1C   | Red     | <b>BW</b> 82(+1.7)   |
| R PLUS 2039K       | CMS SOCHI 307A       | Polled  | <b>WW</b> 738(84)    |
| PVSS TEMPTATION 1C | MISS R PLUS 0020H    |         | <b>YW</b> 1127(124)  |
|                    | WS BEEF KING W107    |         |                      |
|                    | PVSS TEMPTATION 27P  |         |                      |

Polled, solid Red, stout made. Lower set bull with EPDs above average in every category. His dam, 1C, is a tank and is the grand dam of 23N and 32N in this sale.



**C & E Stephens Farms, Craik SK** **Lots 11-14**  
 Chris & Erin Stephens 306-631-3826 [ecstephens@sasktel.net](mailto:ecstephens@sasktel.net)

|                  |                           |           |                      |
|------------------|---------------------------|-----------|----------------------|
| <b>11</b>        | <b>CHER NEIL 24N</b>      | PG1533402 | <b>BD</b> 07/01/2025 |
|                  | CES 24N                   | Red       | <b>BW</b> 78(+1.9)   |
| MRL MISSILE 138C | COME AS U R RED ROCKET    | Polled    | <b>WW</b> 706(75)    |
| CHER KRYSYAL 21K | MRL MISS 2423Z            |           | <b>YW</b> 1127(102)  |
|                  | DOUBLE BAR D BOULDER 49G  |           |                      |
|                  | FAIRVIEW MS DERRINGER 53D |           |                      |

A Red calving ease option with moderate bw. Sired by MRL Missile for extra punch for growth.

|           |            |
|-----------|------------|
| <b>BD</b> | 07/01/2025 |
| <b>BW</b> | 78(+1.9)   |
| <b>WW</b> | 706(75)    |
| <b>YW</b> | 1127(102)  |



7

**12****CHER NUTS N BOLTS 54N**

CES 54N

Red

PG1533458

Polled

BJL MR KILL SWITCH 59H  
LAKEVIEW MS CONGO 104GWEHATLAND KILL SWITCH  
BJL MISS LEAH 45A  
SUNNY VALLEY CONGO 61C  
LAKEVIEW MS PRESIDENT 32T

Large framed power bull. A little more colour to add to white calves. A non-diluter coming from 2 black parents.

|           |            |
|-----------|------------|
| <b>BD</b> | 22/02/2025 |
| <b>BW</b> | 90(+4.9)   |
| <b>WW</b> | 700(74)    |
| <b>YW</b> | (109)      |

**13****CHER NERDS 51N**

CES 51N

Red

PG1533449

Polled

BJL MR KILL SWITCH 59H  
SPRINGCREEK LENA 104KWEHATLAND KILL SWITCH  
BJL MISS LEAH 45A  
SPRINGCREEK LADIES MAN 90E  
SPRINGCREEK LENA 11F

Red star-head eye catcher. Non-diluter coming from 2 black parents. Should be an easy calver!

|           |            |
|-----------|------------|
| <b>BD</b> | 19/02/2025 |
| <b>BW</b> | 88(+3.1)   |
| <b>WW</b> | 630(70)    |
| <b>YW</b> | (106)      |

**14****CHER MARKSMAN 19M**

CES 19M

Black

PG1492550

Polled

LRX BLACKHAWK 16D  
LAKEVIEW MS CONGO 6ESPRINGCREEK LINER 104S  
MUIRHEADS GEMSTONE 6Y  
SUNNY VALLEY CONGO 61C  
LAKEVIEW MS ECLEC 76B

Long bodied well muscled bull. Great 2yr old option to cover more cows. Just the right amount of calving ease and power!

|           |            |
|-----------|------------|
| <b>BD</b> | 19/01/2024 |
| <b>BW</b> | 85(+1.9)   |
| <b>WW</b> | 777(73)    |
| <b>YW</b> | (101)      |

**Wood Creek Ranch, Watrous SK****Lots 15-18**

Dean Stewart 306-946-7890 woodcreekranch@hotmail.com

**15****WOOD CREEK BRADY 17M**

DSC 17M

Red

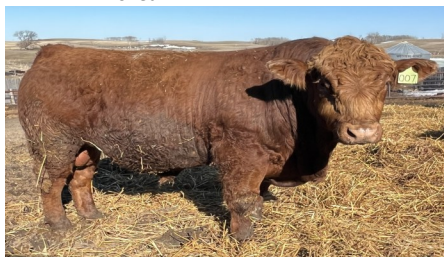
PG1485806

Polled

LRX BLACKHAWK 16D  
LAKEVIEW MS CONGO 6ESPRINGCREEK LINER 104S  
MUIRHEADS GEMSTONE 6Y  
SUNNY VALLEY CONGO 61C  
LAKEVIEW MS ECLEC 76B

PB Homo Polled non diluter out of a large framed cow from Sunny Valley. Maternal brother sold last year to Stewart Archer.

|           |            |
|-----------|------------|
| <b>BD</b> | 01/05/2024 |
| <b>BW</b> | 107(+3.6)  |
| <b>WW</b> | (80)       |
| <b>YW</b> | (113)      |



**16****WOOD CREEK BRADY 5M**

DCS 5M

Black

PG1485792

Polled

FAIRVIEW DIVIDEND 117H  
JONESYS MISS ODIN 64HFAIRVIEW PAYROLL 19D  
FAIR VIEW SAVANNAH 17E  
PWK DENRAY 61A 60D  
JONESYS MS CHOICE 64EPB Homo Polled Red  
carrier out of a smaller  
framed cow purchased  
from Jones in MB.  
April 3 weight 1700lbs.

|           |            |
|-----------|------------|
| <b>BD</b> | 19/04/2024 |
| <b>BW</b> | 93(+5.7)   |
| <b>WW</b> | (75)       |
| <b>YW</b> | (109)      |

**17****WOOD CREEK BRADY 12M**

DCS 12M

Black

PG1485805

Polled

W2 BRADY 57J  
PHEASANTDALE LADY 133GWHEATLAND RIVAL 8125F  
SVS BLK JENNA 717E  
MRL 142D  
PHEASANTDALE MS BLK BB 99DPB Homo Polled Red  
carrier out of a larger  
framed cow purchased  
from Pheasantdale.  
April 3 weight 1750lbs

|           |            |
|-----------|------------|
| <b>BD</b> | 30/04/2024 |
| <b>BW</b> | 96(+2.8)   |
| <b>WW</b> | (68)       |
| <b>YW</b> | (94)       |

**18****WOOD CREEK BRADY 18M**

DCS 18M

Red

PG1485807

Polled

W2 BRADY 57J  
RENDEZVOUS EYEFULL 574JWHEATLAND RIVAL 8125F  
SVS BLK JENNA 717E  
MCINTOSH LEGACY 28F  
RENDEZVOUS CHARLENE 201GPB Homo Polled non di-  
luter out of a medium  
framed cow purchased  
from Rendezvous in MB.  
April 3 weight 1645lbs.

|           |            |
|-----------|------------|
| <b>BD</b> | 02/05/2024 |
| <b>BW</b> | 100(+3.0)  |
| <b>WW</b> | (70)       |
| <b>YW</b> | (98)       |

**RED ANGUS****DKF Angus, Gladmar SK****Lots 19-21**

Dwayne &amp; Karen Fettes 306-969-4506, Scott &amp; Tina, Brandy, Eric Fettes 306-815-7023 dkfredangus@sasktel.net

Videos of bulls on [dkfangus.ca](http://dkfangus.ca) Another strong selection of quality Red, Heifer & Cow DKF Bulls:  
Call or Come to the Ranch to see the cows that raise these bulls Or Talk to us Before, or At the sale, so that  
we may help you select the best possible bull for your herd—to give you Calving Ease plus Performance!**19****RED DKF ILLICIT 92N**

DKF 92N


2432302

RED U-2 ILLICIT 423P  
RED DKF MISS RAZOR SHARP 101KRED U-2 ICON 223M  
RED U-2 DUCHESS 2G  
RED DKF RAZOR 55C  
RED DKF MISS POWER EYE

|           |            |
|-----------|------------|
| <b>BD</b> | 09/02/2025 |
| <b>BW</b> | 64(-2.3)   |
| <b>WW</b> | 650(32)    |
| <b>YW</b> | (56)       |



|           |                            |  |           |            |
|-----------|----------------------------|--|-----------|------------|
| <b>20</b> | <b>RED DKF STAR 138N</b>   | 2441260                                      | <b>BD</b> | 16/03/2025 |
|           | DKF 138N                   |  | <b>BW</b> | 71(0.0)    |
|           | RED DKF RAB STAR 49L       | RED BVR RAB STAR 56C                         | <b>WW</b> | 717(31)    |
|           | RED DKF MISS ROCKSTAR 144L | RED DKF MISS ILLICIT 56C                     | <b>YW</b> | (52)       |
|           |                            | RED DKF ILLICIT 24E<br>DKF MISS GAME DAY 44F |           |            |

|           |                               |                           |   |           |            |           |          |           |         |           |      |
|-----------|-------------------------------|---------------------------|---|-----------|------------|-----------|----------|-----------|---------|-----------|------|
| <b>21</b> | <b>RED DKFE RACER 17N</b>     | 2429244                   |   |           |            |           |          |           |         |           |      |
|           | DKFE 17N                      |                           |   |           |            |           |          |           |         |           |      |
|           | RED DKF RACER 8E              | RED DKF RAZOR 53C         |   |           |            |           |          |           |         |           |      |
|           | RED DKF MISS POPEYE 136G      | RED DKFE MISS ACE 84C     |   |           |            |           |          |           |         |           |      |
|           |                               | RED DKF DISTINGUISHED 16D |   |           |            |           |          |           |         |           |      |
|           | RED DKF MISS JACK DANIELS 23E |                           |   |           |            |           |          |           |         |           |      |
|           |                               |                           | <table border="1" style="width:100%; border-collapse: collapse;"> <tr><td><b>BD</b></td><td>23/01/2025</td></tr> <tr><td><b>BW</b></td><td>82(+1.1)</td></tr> <tr><td><b>WW</b></td><td>640(34)</td></tr> <tr><td><b>YW</b></td><td>(59)</td></tr> </table> | <b>BD</b> | 23/01/2025 | <b>BW</b> | 82(+1.1) | <b>WW</b> | 640(34) | <b>YW</b> | (59) |
| <b>BD</b> | 23/01/2025                    |                           |   |           |            |           |          |           |         |           |      |
| <b>BW</b> | 82(+1.1)                      |                           |   |           |            |           |          |           |         |           |      |
| <b>WW</b> | 640(34)                       |                           |   |           |            |           |          |           |         |           |      |
| <b>YW</b> | (59)                          |                           |   |           |            |           |          |           |         |           |      |

**Deer Range Farms, Stewart Valley SK** **Lots 22-23**

Travis Olson 306-741-9275 [deer.range.farms@gmail.com](mailto:deer.range.farms@gmail.com)

|           |                                  |                                |           |            |
|-----------|----------------------------------|--------------------------------|-----------|------------|
| <b>22</b> | <b>RED DEER RANGE EXCEL 342M</b> | 2378984                        | <b>BD</b> | 10/04/2024 |
|           | DRF 342M                         | Twin                           | <b>BW</b> | 70(+3.1)   |
|           | RED DEER RANGE NATE 159H         | RED DEER RANGE ALTERNATIVE 73C | <b>WW</b> | 620(37)    |
|           | RED DEER RANGE LUCY 281F         | RED DEER RANGE CHEROKEE 86A    | <b>YW</b> | (62)       |
|           |                                  | RED FLYING K BUCKSHOT 68C      |           |            |

Excel is from a fabulous cow who is a sister to our herd bull. He wil make some great females!

|           |                                   |  |            |            |
|-----------|-----------------------------------|--|------------|------------|
| <b>23</b> | <b>RED DEER RANGE BESSIE 158M</b> | 2359193  | <b>BD</b>  | 25/03/2024 |
|           | DRF 158M                          |  | <b>BW</b>  | 89(+4.8)   |
|           | RED DEER RANGE NATE 159H          | RED RUNNING JR MASTERMIND 24Y                    | <b>WW5</b> | 568(48)    |
|           | RED BAR-E-L BESSIE 173Z           | RED DEER RANGE XACT 162E                         | <b>YW</b>  | (83)       |
|           |                                   | RED WHEEL ALLIANCE 22U<br>RED BAR-E-L BESSIE 20U |            |            |

158M has some great genetics behind him. We used a maternal brother as a herd bull a few years ago. The dam is 14 years old and calved again this spring!

**Deep Lake Livestock, Indian Head SK** **Lot 24**


Ryan & Ashley Kattler 306-695-7340 [gritcs@hotmail.com](mailto:gritcs@hotmail.com)

The bulls raised at Deep Lake Livestock have a focus on longevity, maternal strength, & performance!

|           |                                   |  |           |            |
|-----------|-----------------------------------|--|-----------|------------|
| <b>24</b> | <b>RED DEEP LAKE RED ROCK 15N</b> | 2411256  | <b>BD</b> | 17/02/2025 |
|           | SDK 15N                           |  | <b>BW</b> | 82(+0.7)   |
|           | RED DKF ILLICIT 24E               | RED U-2 ILLICIT 423P                               | <b>WW</b> | (39)       |
|           | RED DEEP LAKE MS PRINCE 4K        | RED DKF MISS POWER EYE 62C                         | <b>YW</b> | (69)       |
|           |                                   | RED BIEBER SPARTACUS A193<br>RED T-K MS PRINCE 94C |           |            |

**Layne and Megan Giofu** **Lot 25**

Layne 306-690-9543 [megan.rosso92@gmail.com](mailto:megan.rosso92@gmail.com)

|  |                          |                              |   |           |            |           |          |           |          |           |       |
|--|--------------------------|------------------------------|---|-----------|------------|-----------|----------|-----------|----------|-----------|-------|
| <b>25</b>  | <b>RED GIOFU NOLA 2N</b> | 2449504                      |   |           |            |           |          |           |          |           |       |
|  | LGG 2N                   |                              |   |           |            |           |          |           |          |           |       |
|  | RED T&S LOADED 78H       | REDTRIPOLE H LOADED ARAB 31D |   |           |            |           |          |           |          |           |       |
|  | RED BLAKE'S ALANA 105J   | RED T&S MISS HIGH TOPP 14E   |   |           |            |           |          |           |          |           |       |
|  |                          | RED SIX MILE ELEMENT 10E     |   |           |            |           |          |           |          |           |       |
|  | RED BLAKE'S ALANA 71F    |                              |   |           |            |           |          |           |          |           |       |
| Moderate framed bull with lots of hair, Actual BW 70lbs and actual weaning weight coming off summer grass at 652lbs. This February born yearling is quiet and easy to work with and has not been pushed! |                          |                              | <table border="1" style="width:100%; border-collapse: collapse;"> <tr><td><b>BD</b></td><td>21/02/2025</td></tr> <tr><td><b>BW</b></td><td>70(+7.0)</td></tr> <tr><td><b>WW</b></td><td>652(+42)</td></tr> <tr><td><b>YW</b></td><td>(+69)</td></tr> </table> | <b>BD</b> | 21/02/2025 | <b>BW</b> | 70(+7.0) | <b>WW</b> | 652(+42) | <b>YW</b> | (+69) |
| <b>BD</b>  | 21/02/2025               |                              |   |           |            |           |          |           |          |           |       |
| <b>BW</b>  | 70(+7.0)                 |                              |   |           |            |           |          |           |          |           |       |
| <b>WW</b>  | 652(+42)                 |                              |   |           |            |           |          |           |          |           |       |
| <b>YW</b>  | (+69)                    |                              |   |           |            |           |          |           |          |           |       |

Dylan 306-380-6393 dmalinowski726@gmail.com

**26 RED MALINOWSKI MILLENIUM 5N**  
MAL 5N

2420330

RED MRLA NEW ERA 87Y  
RED MRLA MISS 580U  
RED MALINOWSKI KERRI 9K  
RED BIEBER CLATONMIC C218  
RED CARMICHAEL KERRI 12D

AI sired, calving ease built in both sides of his pedigree. We purchased Millenium semen to make heifer bulls. Dam is a 9K Atomic daughter off a Flying K cow & did a really good job on her 1st calf!

|           |            |
|-----------|------------|
| <b>BD</b> | 10/03/2025 |
| <b>BW</b> | 66(-1.6)   |
| <b>WW</b> | 644(42)    |
| <b>YW</b> | 1050(75)   |



**27 RED MALINOWSKI RED BEAR 22N**  
MAL 22N

2420354

RED DUFF READ BEAR  
RED NRA RED BEAR 26K  
RED NRA KNIGHT CALL 5G  
RED WRAZ MOLLY 71H  
RED VGW NEXT STEP 554  
WRAZ RC MOLLY 673D

We purchased Red Bear from Kielson L & C for heifers. His first calves were impressive so we started using him on cows too. Calving ease with good performance on weaning & yearling EPDs. Heifer or Cow bull!

|           |            |
|-----------|------------|
| <b>BD</b> | 14/03/2025 |
| <b>BW</b> | 84(+2.0)   |
| <b>WW</b> | 638(55)    |
| <b>YW</b> | 1185(90)   |



**28 RED MALINOWSKI CHECKMATE 23N**  
MAL 23N

2437876

RED LARR PAYCHECK 0728  
RED BIEBER CHECKMATE K126  
RED BIEBER PRIMROSE 225H  
RED CARMICHAEL MOIRA 49E  
RED CARMICHAEL CHIEF 78A  
RED CARMICHAEL MOIRA 19Y

23N is a sire verified AI bull out of a Carmichael cow. He was right near the top at weaning and yearling weights. Moderate BW but due to thickness and mass would would recommend to use on cows!

|           |            |
|-----------|------------|
| <b>BD</b> | 14/03/2025 |
| <b>BW</b> | 84(+0.2)   |
| <b>WW</b> | 724(50)    |
| <b>YW</b> | 1220(82)   |



**29 RED MALINOWSKI PRIME RIB 51N**  
MAL 51N


2420372


RED JLL PRIME RIB 5H  
RED JLL PRINCESS 4W  
RED CARMICHAEL RITA 56E  
RED FLYING K JULIAN 71B  
RED CARMICHAEL RITA 109A


He's off Prime Rib 5H from JLL Livestock and a big dark red cow from Carmichael's with a good udder, feet, and temperament. Prime Rib gives awesome females and consistent bulls—recommended for cows!


|           |            |
|-----------|------------|
| <b>BD</b> | 23/03/2025 |
| <b>BW</b> | 92(+2.3)   |
| <b>WW</b> | 724(35)    |
| <b>YW</b> | 1220(62)   |





|   |                                     |  |           |            |           |          |           |         |           |          |
|---|-------------------------------------|--|-----------|------------|-----------|----------|-----------|---------|-----------|----------|
| <b>30</b>   | <b>RED FORBES HEDGE 1M</b><br>LX 1M | 2396346  |           |            |           |          |           |         |           |          |
| RED JAS JACKAL 19J<br>RED FORBES BIG SKY 24F  |                                     |    |           |            |           |          |           |         |           |          |
| RED LSF SRR HEDGE FUND 7017E<br>RED RED JAS DOT TIBBIE 68G<br>RED RED T-K PIONEER 45D<br>RED DIAMOND B BIG SKY 117C |                                     |  |           |            |           |          |           |         |           |          |
| Calving ease heifer<br>bull with some added<br>performance!   |                                     |  |           |            |           |          |           |         |           |          |
|   |                                     | <table border="1" style="margin: auto;"> <tr><td><b>BD</b></td><td>20/03/2024</td></tr> <tr><td><b>BW</b></td><td>82(+2.4)</td></tr> <tr><td><b>WW</b></td><td>671(44)</td></tr> <tr><td><b>YW</b></td><td>1130(81)</td></tr> </table> | <b>BD</b> | 20/03/2024 | <b>BW</b> | 82(+2.4) | <b>WW</b> | 671(44) | <b>YW</b> | 1130(81) |
| <b>BD</b>   | 20/03/2024                          |  |           |            |           |          |           |         |           |          |
| <b>BW</b>   | 82(+2.4)                            |  |           |            |           |          |           |         |           |          |
| <b>WW</b>   | 671(44)                             |  |           |            |           |          |           |         |           |          |
| <b>YW</b>   | 1130(81)                            |  |           |            |           |          |           |         |           |          |

|  |  |  |           |            |           |          |           |         |           |          |
|--|--|--|-----------|------------|-----------|----------|-----------|---------|-----------|----------|
| <b>31</b>  | <b>RED FORBES JASPER 35M</b><br>LX 35M | 2396352  |           |            |           |          |           |         |           |          |
| RED JAS JACKAL 19J<br>DIAMOND B FINNY 69C  |  |    |           |            |           |          |           |         |           |          |
| RED LSF SRR HEDGE FUND 7017E<br>RED RED JAS DOT TIBBIE 68G<br>OAKWOOD FINAL ANSWER<br>DIAMOND B STOCKI 28T |  |  |           |            |           |          |           |         |           |          |
| Out of one of our long<br>time top producing<br>cows!  |  |  |           |            |           |          |           |         |           |          |
|  |  | <table border="1" style="margin: auto;"> <tr><td><b>BD</b></td><td>10/05/2024</td></tr> <tr><td><b>BW</b></td><td>83(+1.6)</td></tr> <tr><td><b>WW</b></td><td>533(42)</td></tr> <tr><td><b>YW</b></td><td>1195(77)</td></tr> </table> | <b>BD</b> | 10/05/2024 | <b>BW</b> | 83(+1.6) | <b>WW</b> | 533(42) | <b>YW</b> | 1195(77) |
| <b>BD</b>  | 10/05/2024                             |  |           |            |           |          |           |         |           |          |
| <b>BW</b>  | 83(+1.6)                               |  |           |            |           |          |           |         |           |          |
| <b>WW</b>  | 533(42)                                |  |           |            |           |          |           |         |           |          |
| <b>YW</b>  | 1195(77)                               |  |           |            |           |          |           |         |           |          |

|  |                                     |  |   |           |            |           |          |           |      |           |      |
|--|-------------------------------------|--|---|-----------|------------|-----------|----------|-----------|------|-----------|------|
| <b>32</b>  | <b>RED LV CAPITAL 47N</b><br>LV 47N | 2430457  |   |           |            |           |          |           |      |           |      |
| RED LV CAPITAL 43H<br>RED T-K KURUBA 123D  |                                     |  | <table border="1" style="margin: auto;"> <tr><td><b>BD</b></td><td>14/02/2025</td></tr> <tr><td><b>BW</b></td><td>91(+3.9)</td></tr> <tr><td><b>WW</b></td><td>(36)</td></tr> <tr><td><b>YW</b></td><td>(65)</td></tr> </table> | <b>BD</b> | 14/02/2025 | <b>BW</b> | 91(+3.9) | <b>WW</b> | (36) | <b>YW</b> | (65) |
| <b>BD</b>  | 14/02/2025                          |  |   |           |            |           |          |           |      |           |      |
| <b>BW</b>  | 91(+3.9)                            |  |   |           |            |           |          |           |      |           |      |
| <b>WW</b>  | (36)                                |  |   |           |            |           |          |           |      |           |      |
| <b>YW</b>  | (65)                                |  |   |           |            |           |          |           |      |           |      |
| RED MRLA RESOURCE 137E<br>RED T-K MINIVA 32C<br>RED T-K COBRA 34B<br>RED BOGLE PASS KURUBA |                                     |  |   |           |            |           |          |           |      |           |      |

|   |                                       |  |   |           |            |           |          |           |      |           |      |
|---|---------------------------------------|--|---|-----------|------------|-----------|----------|-----------|------|-----------|------|
| <b>33</b>   | <b>RED LV JETSTREAM 51N</b><br>LV 51N | 2430496  |   |           |            |           |          |           |      |           |      |
| RED SIX MILE JETSTREAM 586J<br>RED LV REBA 66G  |                                       |  | <table border="1" style="margin: auto;"> <tr><td><b>BD</b></td><td>17/02/2025</td></tr> <tr><td><b>BW</b></td><td>91(+2.5)</td></tr> <tr><td><b>WW</b></td><td>(43)</td></tr> <tr><td><b>YW</b></td><td>(74)</td></tr> </table> | <b>BD</b> | 17/02/2025 | <b>BW</b> | 91(+2.5) | <b>WW</b> | (43) | <b>YW</b> | (74) |
| <b>BD</b>   | 17/02/2025                            |  |   |           |            |           |          |           |      |           |      |
| <b>BW</b>   | 91(+2.5)                              |  |   |           |            |           |          |           |      |           |      |
| <b>WW</b>   | (43)                                  |  |   |           |            |           |          |           |      |           |      |
| <b>YW</b>   | (74)                                  |  |   |           |            |           |          |           |      |           |      |
| RED SIX MILE GENTRY 342G<br>RED SOO LINE MS BANE BERRY 0033<br>RED NRA STAUNCH 71A<br>RED T-K REBA 105E |                                       |  |   |           |            |           |          |           |      |           |      |

|   |                                     |  |   |           |            |           |          |           |      |           |      |
|---|-------------------------------------|--|---|-----------|------------|-----------|----------|-----------|------|-----------|------|
| <b>34</b>   | <b>RED LV CAPITAL 24N</b><br>LV 24N | 2430437  |   |           |            |           |          |           |      |           |      |
| RED LV CAPITAL 62K<br>RED T-K ROBOANA 90A   |                                     |  | <table border="1" style="margin: auto;"> <tr><td><b>BD</b></td><td>17/02/2025</td></tr> <tr><td><b>BW</b></td><td>91(+2.2)</td></tr> <tr><td><b>WW</b></td><td>(32)</td></tr> <tr><td><b>YW</b></td><td>(56)</td></tr> </table> | <b>BD</b> | 17/02/2025 | <b>BW</b> | 91(+2.2) | <b>WW</b> | (32) | <b>YW</b> | (56) |
| <b>BD</b>   | 17/02/2025                          |  |   |           |            |           |          |           |      |           |      |
| <b>BW</b>   | 91(+2.2)                            |  |   |           |            |           |          |           |      |           |      |
| <b>WW</b>   | (32)                                |  |   |           |            |           |          |           |      |           |      |
| <b>YW</b>   | (56)                                |  |   |           |            |           |          |           |      |           |      |
| RED LV CAPITAL 43H<br>RED T-K LASSIE 86D<br>RED SIX MILE TROY 243T<br>RED T-K ROBOANA 40T |                                     |  |   |           |            |           |          |           |      |           |      |

|   |                                     |  |   |           |            |           |    |           |  |           |  |
|---|-------------------------------------|--|---|-----------|------------|-----------|----|-----------|--|-----------|--|
| <b>35</b>   | <b>RED LV CAPITAL 48N</b><br>LV 48N | 2465078  |   |           |            |           |    |           |  |           |  |
| RED LV CAPITAL 43H<br>RED LV MINIVA 83H   |                                     |  | <table border="1" style="margin: auto;"> <tr><td><b>BD</b></td><td>14/02/2025</td></tr> <tr><td><b>BW</b></td><td>92</td></tr> <tr><td><b>WW</b></td><td></td></tr> <tr><td><b>YW</b></td><td></td></tr> </table> | <b>BD</b> | 14/02/2025 | <b>BW</b> | 92 | <b>WW</b> |  | <b>YW</b> |  |
| <b>BD</b>   | 14/02/2025                          |  |   |           |            |           |    |           |  |           |  |
| <b>BW</b>   | 92                                  |  |   |           |            |           |    |           |  |           |  |
| <b>WW</b>   |                                     |  |   |           |            |           |    |           |  |           |  |
| <b>YW</b>   |                                     |  |   |           |            |           |    |           |  |           |  |
| RED MRLA RESOURCE 137E<br>RED T-K MINIVA 32C<br>RED DKF RAZOR'S EDGE 16F<br>RED T-K MINIVA 49U 12 |                                     |  |   |           |            |           |    |           |  |           |  |

**Rosso Angus, Moose Jaw SK****Lot 36**

Darwin 306-690-8916 or Will 306-690-8860 rosso.c@sasktel.net

|           |                            |   |           |            |
|-----------|----------------------------|---|-----------|------------|
| <b>36</b> | <b>RED ROSSO NOOR 510N</b> | 2451121   | <b>BD</b> | 03/04/2025 |
|           | ROS 510N                   |   | <b>BW</b> | 85         |
|           | RED EYE HILL LEDGER 41L    | RED WRAZ BIG ROCK 140H  | <b>WW</b> |            |
|           | RED ROSSO MS BRANDY 1J     | RED EYE HILL MS CRESTON 10H<br>RED C-BAR BIG RIVER 119E<br>RED ROSSO MS BRANDY 5E | <b>YW</b> |            |

**BLACK ANGUS****Deep Lake Livestock, Indian Head SK****Lots 37-40**

Ryan &amp; Ashley Kattler 306-695-7340 gritcs@hotmail.com

The bulls raised at Deep Lake Livestock have a focus on longevity, maternal strength, &amp; performance!

|           |                              |  |           |            |
|-----------|------------------------------|--|-----------|------------|
| <b>37</b> | <b>DEEP LAKE UPGRADE 52N</b> | 2437738  | <b>BD</b> | 01/01/2025 |
|           | DLLL 52N                     |  | <b>BW</b> | 83(+1.7)   |
|           | DEEP LAKE HOMEBREW 51G       | ELLINGSON HOMEGROWN 6035   | <b>WW</b> | 783(42)    |
|           | DKF MISS ROUTE 66 99F        | NORTHERN VIEW ANNIE K 134E<br>RED CROWFOOT ABSOLUTE 3206A<br>DKF MISS POWER UP 18A | <b>YW</b> | (71)       |

|           |                                  |  |           |            |
|-----------|----------------------------------|--|-----------|------------|
| <b>38</b> | <b>DEEP LAKE MASTERPIECE 58N</b> | 2433968  | <b>BD</b> | 01/01/2025 |
|           | DLLL 58N                         |  | <b>BW</b> | 88(+3.0)   |
|           | RED DEEP LAKE UNO 1H             | RED HXC DAWSON 7003E   | <b>WW</b> | 765(56)    |
|           | DEEP LAKE BARBIE 50J             | RED T-K MS PRINCE 94C<br>FREY'S COWBOY LOGIC<br>WILBAR BARBIE 711G | <b>YW</b> | (94)       |

|           |                                  |  |           |            |
|-----------|----------------------------------|--|-----------|------------|
| <b>39</b> | <b>DEEP LAKE REVERSE UNO 55N</b> | 2433972  | <b>BD</b> | 01/01/2025 |
|           | DLLL 55N                         |  | <b>BW</b> | 86(+1.9)   |
|           | RED DEEP LAKE UNO 1H             | RED HXC DAWSON 7003E   | <b>WW</b> | 795(50)    |
|           | NORTHERN VIEW ANNIE K 134K       | RED T-K MS PRINCE 94C<br>BELL UPWARD 5C<br>F V ANNIE K FA 130Z | <b>YW</b> | (88)       |

|           |                                 |   |           |            |
|-----------|---------------------------------|---|-----------|------------|
| <b>40</b> | <b>DEEP LAKE MINDBENDER 61N</b> | 2407149   | <b>BD</b> | 19/01/2025 |
|           | DLLL 61N                        |   | <b>BW</b> | 79(+3.1)   |
|           | DEEP LAKE MINDBENDER 50L        | BAR H MINDBENDER 141D                                     | <b>WW</b> | 717(54)    |
|           | DEEP LAKE JAYBIRD 56L           | RRAR HEROINE 31Z<br>RRAR TOP SHELF 3H<br>RRAR JAYBIRD 37J | <b>YW</b> | (106)      |

**Gold-Bar Livestock, Caronport SK****Lot 41**

Sarah Hasson 306-681-5340 sarah@goldenthread.ca

|           |                                 |   |           |            |
|-----------|---------------------------------|---|-----------|------------|
| <b>41</b> | <b>GOLD-BAR PROPAGANDA 214N</b> | 2415005   | <b>BD</b> | 14/02/2025 |
|           | GBL 214N                        |   | <b>BW</b> | 95(+5.9)   |
|           | FREYBURN TEMPTATION 97L         | U2 TEMPTATION 180E  | <b>WW</b> | 763(68)    |
|           | GODLL-BAR HEROINE 117J          | FREYBURN LASS 44D<br>MLG MOMENTOUS 6079<br>SHEIDAGHAN HEROINE 47B | <b>YW</b> | (121)      |



13



# Hi Low Angus, Lumsden SK

**Lots 42-45**

Dan Howell 306-581-7606 hilowangus@sasktel.net

|           |                              |                               |           |            |
|-----------|------------------------------|-------------------------------|-----------|------------|
| <b>42</b> | <b>HI LOW PLAYBOOK 61N</b>   | 2457414                       | <b>BD</b> | 11/03/2025 |
|           | HTD 61N                      |                               | <b>BW</b> | 89(+2.7)   |
|           | HI LOW PLAYBOOK 43L          | HI LOW PLAYBOOK 46H           | <b>WW</b> | 725(71)    |
|           | HI LOW DAWN A VILLE 12K      | HI LOW ERICA 66J              | <b>YW</b> | (124)      |
|           |                              | DEER VALLEY GROWTH FUND       |           |            |
|           | HI LOW DAWN A VILLE 55F      |                               |           |            |
| <b>43</b> | <b>HI LOW TRIUMPH 64N</b>    | 2439613                       | <b>BD</b> | 12/03/2025 |
|           | HTD 64N                      |                               | <b>BW</b> | 78(+2.5)   |
|           | NU-HORIZON TRIUMPH 352L      | COLEMAN TRIUMPH 9145          | <b>WW</b> | 653(54)    |
|           | HI LOW PRIDE                 | COLEMAN EVERELDA ENTENSE 6325 | <b>YW</b> | (96)       |
|           |                              | PEAK DOT ROUGHRIDER 2063G     |           |            |
|           | HILOW PRIDE 4F               |                               |           |            |
| <b>44</b> | <b>HI LOW PLAYBOOK 77N</b>   | 2464846                       | <b>BD</b> | 19/03/2025 |
|           | HTD 77N                      |                               | <b>BW</b> | 93(+3.0)   |
|           | PEAK DOT ROUGHRIDER 2063G    | ELLINGSON ROUGHRIDER 4202     | <b>WW</b> | 624(55)    |
|           | HI LOW LUCINDA 36H           | PEAK DOT BARDOLIA 482B        | <b>YW</b> | (98)       |
|           |                              | KG SOLUTION 0018              |           |            |
|           | HI LOW LUCINDA 5290          |                               |           |            |
| <b>45</b> | <b>HI LOW BELOW ZERO 31N</b> | 2469206                       | <b>BD</b> | 17/02/2025 |
|           | HTD 31N                      |                               | <b>BW</b> | 80(-0.2)   |
|           | COLEMAN BELOW ZERO 2106      | SITZ STELLAR 726D             | <b>WW</b> | 582(42)    |
|           | HILOW LADY 26A               | COLEMAN DONNA 0153            | <b>YW</b> | (85)       |
|           |                              | CONNEALY IRISH 0204           |           |            |
|           | LADY OF PEAK DOT 865P        |                               |           |            |

# Irving Angus, Lumsden SK

**Lots 46-57**


John M. Irving 306-587-7997 johnmirving12@gmail.com

|           |                                    |                              |           |            |
|-----------|------------------------------------|------------------------------|-----------|------------|
| <b>46</b> | <b>IRVING ANGUS SUPERTRAIN 3N</b>  | 2421750                      | <b>BD</b> | 15/02/2025 |
|           | IRV 3N                             |                              | <b>BW</b> | 88(+3.8)   |
|           | NORTHERN VIEW SUPER DUTY 138H      | NORTHERN VIEW SUPER DUTY 89F | <b>WW</b> | 675(50)    |
|           | IRVING ANGUS BUXOM ANN 33H         | NORTHERN VIEW BELLE 101D     | <b>YW</b> | 1200(95)   |
|           |                                    | NORTHERN VIEW PIONEER 20Z    |           |            |
|           | IRVING ANGUS BUXOM ANN 23C         |                              |           |            |
| <b>47</b> | <b>IRVING ANGUS SUPER DUTY 4N</b>  | 2421755                      | <b>BD</b> | 16/02/2025 |
|           | IRV 4N                             |                              | <b>BW</b> | 86(+3.7)   |
|           | NORTHERN VIEW SUPER DUTY 138H      | NORTHERN VIEW SUPER DUTY 89F | <b>WW</b> | 648(45)    |
|           | IRVING ANGUS ELINE 34J             | NORTHERN VIEW BELLE 101D     | <b>YW</b> | 1176(84)   |
|           |                                    | SVR DISPATCHER 414D          |           |            |
|           | IRVING ANGUS ELINE 10E             |                              |           |            |
| <b>48</b> | <b>IRVING ANGUS STEELWORKS 6N</b>  | 2419799                      | <b>BD</b> | 17/02/2025 |
|           | IRV 6N                             |                              | <b>BW</b> | 80(+2.9)   |
|           | IRVING ANGUS STEEL PATCH 6K        | SVR DISPATCHER 414D          | <b>WW</b> | 680(53)    |
|           | IRVING ANGUS LADY MCHENRY 8G       | IRVING ANGUS LADY LEE 39C    | <b>YW</b> | 1172(89)   |
|           |                                    | NORTHERN VIEW PIONEER 20Z    |           |            |
|           | IRV LADY MCHENRY 12X               |                              |           |            |
| <b>49</b> | <b>IRVING ANGUS STEELYARD 10N</b>  | 2419795                      | <b>BD</b> | 21/02/2025 |
|           | IRV 10N                            |                              | <b>BW</b> | 80(+2.8)   |
|           | IRVING ANGUS STEEL PATCH 6K        | SVR DISPATCHER 414D          | <b>WW</b> | 671(53)    |
|           | IRVING ANGUS PRIDE 22E             | IRVING ANGUS LADY LEE 39C    | <b>YW</b> | 1126(89)   |
|           |                                    | NORTHERN VIEW PIONEER 20Z    |           |            |
|           | IRVING ANGUS KODIAK PRIDE 5A       |                              |           |            |
| <b>50</b> | <b>IRVING ANGUS SUPERSPORT 11N</b> | 2421751                      | <b>BD</b> | 22/02/2025 |
|           | IRV 11N                            | 14                           | <b>BW</b> | 82(+2.9)   |
|           | NORTHERN VIEW SUPER DUTY 138H      | NORTHERN VIEW SUPER DUTY 89F | <b>WW</b> | 615(39)    |
|           | IRVING ANGUS LADY LEE 1F           | NORTHERN VIEW BELLE 101D     | <b>YW</b> | 1070(74)   |
|           |                                    | IRVING ANGUS KODIAK 13B      |           |            |
|           | IRV LADY LEE 3R                    |                              |           |            |

|           |                                     |                                |           |            |
|-----------|-------------------------------------|--------------------------------|-----------|------------|
| <b>51</b> | <b>IRVING ANGUS SUPERMOTO 15N</b>   | 2421740                        | <b>BD</b> | 25/02/2025 |
|           | IRV 15N                             |                                | <b>BW</b> | 79(+2.9)   |
|           | NORTHERN VIEW SUPER DUTY 89F        |                                | <b>WW</b> | 600(40)    |
|           | NORTHERN VIEW SUPER DUTY 138H       | NORTHERN VIEW BELLE 101D       | <b>YW</b> | 1075(75)   |
|           | IRVING ANGUS ROSEBUD 24H            | SVR DISPATCHER 414D            |           |            |
|           |                                     | IRV IDEAL ROSEBUD 21Y          |           |            |
| <b>52</b> | <b>IRVING ANGUS STEEL PATCH 17N</b> | 2419806                        | <b>BD</b> | 27/02/2025 |
|           | IRV 17N                             |                                | <b>BW</b> | 86(+4.7)   |
|           | SVR DISPATCHER 414D                 |                                | <b>WW</b> | 692(54)    |
|           | IRVING ANGUS STEEL PATCH 6K         | IRVING ANGUS LADY LEE 39C      | <b>YW</b> | 1202(90)   |
|           | IRVING ANGUS SD ROSEBUD 21K         | NORTHERN VIEW SUPER DUTY 138H  |           |            |
|           |                                     | IRVING ANGUS ROSEBUD 21C       |           |            |
| <b>53</b> | <b>IRVING ANGUS GALAXIE 500 19N</b> | 2419805                        | <b>BD</b> | 28/02/2025 |
|           | IRV 19N                             |                                | <b>BW</b> | 80(+3.2)   |
|           | SCHIEFELBEIN ATTRACTIVE 4565        |                                | <b>WW</b> | 653(55)    |
|           | NORTHERN VIEW STELLAR 91J           | NORTHERN VIEW SUSAN 122B       | <b>YW</b> | 1228(98)   |
|           | IRVING ANGUS SD ELINE 7K            | NORTHERN VIEW SUPER DUTY 138H  |           |            |
|           |                                     | IRVING ANGUS ELINE 3G          |           |            |
| <b>54</b> | <b>IRVING ANGUS GALAXIE 500 21N</b> | 2419796                        | <b>BD</b> | 28/02/2025 |
|           | IRV 21N                             |                                | <b>BW</b> | 86(+4.3)   |
|           | SCHIEFELBEIN ATTRACTIVE 4565        |                                | <b>WW</b> | 644(53)    |
|           | NORTHERN VIEW STELLAR 91J           | NORTHERN VIEW SUSAN 122B       | <b>YW</b> | 1169(98)   |
|           | IRVING ANGUS LUCY 1G                | NORTHERN VIEW PIONEER 20Z      |           |            |
|           |                                     | IRVING ANGUS IDEAL LUCY 10A    |           |            |
| <b>55</b> | <b>IRVING ANGUS BIOSTEEL 22N</b>    | 2419791                        | <b>BD</b> | 28/02/2025 |
|           | IRV 22N                             |                                | <b>BW</b> | 75(+2.4)   |
|           | SVR DISPATCHER 414D                 |                                | <b>WW</b> | 653(46)    |
|           | IRVING ANGUS STEEL PATCH 6K         | IRVING ANGUS LADY LEE 39C      | <b>YW</b> | 1168(76)   |
|           | IRVING ANGUS BLACKBIRD 26Z          | ISLA BANK WIDESPREAD 12S       |           |            |
|           |                                     | IRV BLACKBIRD 4N               |           |            |
| <b>56</b> | <b>IRVING ANGUS STEELBOUND 23N</b>  | 2419808                        | <b>BD</b> | 02/03/2025 |
|           | IRV 23N                             |                                | <b>BW</b> | 82(+5.5)   |
|           | SVR DISPATCHER 414D                 |                                | <b>WW</b> | 657(55)    |
|           | IRVING ANGUS STEEL PATCH 6K         | IRVING ANGUS LADY LEE 39C      | <b>YW</b> | 1182(94)   |
|           | IRVING ANGUS ROSEBUD 30L            | NORTHERN VIEW STELLAR 91J      |           |            |
|           |                                     | IRV IDEAL ROSEBUD 21Y          |           |            |
| <b>57</b> | <b>IRVING ANGUS SUPERCOIL 29N</b>   | 2421761                        | <b>BD</b> | 10/03/2025 |
|           | IRV 29N                             |                                | <b>BW</b> | 87(+4.2)   |
|           | NORTHERN VIEW SUPER DUTY 89F        |                                | <b>WW</b> | 696(50)    |
|           | NORTHERN VIEW SUPER DUTY 138H       | NORTHERN VIEW BELLE 101D       | <b>YW</b> | 1226(94)   |
|           | IRVING ANGUS LADY LEE 14H           | IRVING ANGUS KODIAK 13B        |           |            |
|           |                                     | IRVING ANGUS IDEAL LADY LEE 3A |           |            |

## Sylvestre Land and Cattle, Redvers SK Lots 58-61

Gilbert & Carol Sylvestre 306-452-7226 [sylvestrelandandcattle@yahoo.com](mailto:sylvestrelandandcattle@yahoo.com)

|           |  |  |            |  |
|-----------|--|--|------------|--|
| <b>58</b> | <b>SYLVESTRE STUNNER 25N</b>   | 2448908  |            |  |
|           | SLCC 25N   |  |            |  |
|           | MUSGRAVE 316 STUNNER   |  |            |  |
|           | SBR STUNNER 1164   | SBF DOLLY 9052   |            |  |
|           | SYLVESTRE ELBA 24E   | BLACK CREEK CEDAR 406B   |            |  |
|           |  | YOUNG DALE ELBA 106Y   |            |  |
|           | From one of the top cows in the herd. She has a beautiful conformation & udder. This bull is a 3/4 brother to 28N! |  |            |  |
|           |  | <b>BD</b>  | 03/02/2025 |  |
|           |  | <b>BW</b>  | 81(+4.1)   |  |
|           |  | <b>WW</b>  | (52)       |  |
|           |  | <b>YW</b>  | (91)       |  |
|           |  |  |            |  |

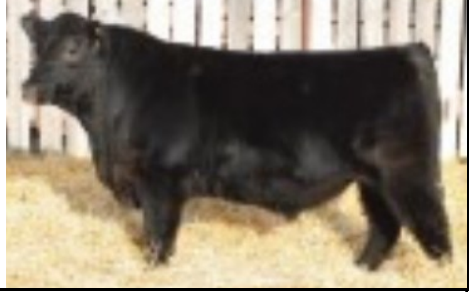
**59****SYLESTRE STUNNER 28N**

SLCC 28N

SBR STUNNER 1164  
SYLVESTRE ELBA 57FMUSGRAVE 316 STUNNER  
SBF DOLLY 9052  
BLACK CREEK CEDAR 406B  
SYLVESTRE ELBA 38CSmooth made with clean lines.  
One of my favourites in the  
pen. 3/4 brother to 25N!

|           |            |
|-----------|------------|
| <b>BD</b> | 09/02/2025 |
| <b>BW</b> | 78(+3.7)   |
| <b>WW</b> | (61)       |
| <b>YW</b> | (102)      |

2448909

**60****SYLESTRE STUNNER 22N**

SLCC 22N

SYLVESTRE STUNNER 7L  
SYLVESTRE ELBA 11JSBF STUNNER 1164  
SYLVESTRE POLLYANNA 35C  
SYLVESETR DOMAIN 6D  
SYLVESTRE ELBA 38CAnother strong topped smooth  
made bull. His dam is a big  
framed, soggy, & good udered  
cow. Stunner 7L has  
another crop of calves on the  
ground!

|           |            |
|-----------|------------|
| <b>BD</b> | 22/01/2025 |
| <b>BW</b> | 77(+4.6)   |
| <b>WW</b> | (57)       |
| <b>YW</b> | (99)       |

2453557

**61****SYLESTRE STUNNER 9M**

SLCC 9M

SBR STUNNER 1164  
RED SYLVESTRE DYNA 32CMUSGRAVE 316 STUNNER  
SBF DOLLY 9052  
RED BRIDGEWAY BLOWN AWAY 45A  
RED BRIDGEWAY DYNA 110WA virgin 2yr old weighing close  
to 2200lbs.. An attractive  
Angus head & neck, smooth  
shouldered, long bodied,  
strong topline, very quiet!

|           |            |
|-----------|------------|
| <b>BD</b> | 09/02/2024 |
| <b>BW</b> | 81(+3.0)   |
| <b>WW</b> | (56)       |
| <b>YW</b> | (92)       |

2399597

**Wagner Angus, Moose Jaw SK****Lots 62-64**

Sharon Wagner 306-631-4522 wagnerangus@xplornet.com

**62****SMW DE FACTO 69N**

SMW 69M

SAV STERLING 1766  
YOUNG DALE GRACE 126ZSITZ STELLAR 726D  
SAV POLLY 9744  
YOUNG DALE PANARAMA 66T  
YOUNG DALE GRACE 19TET—De Facto is an Embryo that I  
purchased for the elite breeding.  
69N was part of my pen of 3 group  
in Medicine Hat that were in the top  
4 pens of 38. He is thick topped, big  
boned, big footed and hairy. Current  
weight April 20- 1720 lbs.  
Cow bull that won't have any prob-  
lems breeding your big cows.

|           |            |
|-----------|------------|
| <b>BD</b> | 30/01/2025 |
| <b>BW</b> | 88(+2.8)   |
| <b>WW</b> | 971(67)    |
| <b>YW</b> | 1541(118)  |

2422889



**63 SMW JUSTIFY 76N**

2408613

SMW 76N

KG JUSTIFIED 3023  
 S BLOSSOM 0696  
 KNOX FORTITUDE 5E  
 BARDOLIA OF PEAK DOT 236Z

SMW JUSTIFY 30K  
 SMW BARDOLIA 9G

SMW Justify 76N is a very smooth shouldered, small headed angus bull. This bull should work in the heifer pen but has enough punch and size to be used on cows!

|           |            |
|-----------|------------|
| <b>BD</b> | 23/02/2025 |
| <b>BW</b> | 78(+2.1)   |
| <b>WW</b> | 885(53)    |
| <b>YW</b> | 1385(90)   |

**64 SMW JUSTIFY 77N**

2408643

SMW 77N

KG JUSTIFIED 3023  
 S BLOSSOM 0696  
 WAR PAY LOADER 056F  
 ISAAK BULLSEYE 748E

SMW JUSTIFY 30K  
 SMW BLACKBIRD 24J

SMW Justify 77N has the looks and phenotype of a heifer bull, small headed, smooth shouldered, and long spined. With these attributes you will have heifer progeny that can be retained or marketed at the high end.

|           |            |
|-----------|------------|
| <b>BD</b> | 23/02/2025 |
| <b>BW</b> | 75(+1.5)   |
| <b>WW</b> | 899(56)    |
| <b>YW</b> | 1465(111)  |

**Rosso Angus, Moose Jaw SK****Lot 65**

Darwin 306-690-8916 or Will 306-690-8860 rosso.c@sasktel.net

**65 ROSSO NASIR 506N**

2451651

ROS 506N

RED WRAZ BIG ROCK 140H  
 RED EYE HILL MS CRESTON 10H  
 PVF INSIGHT 0129  
 GGA BLACKBERRY 29A

RED EYE HILL LEDGER 41L  
 GGA BLACKBERRY 9J

|           |            |
|-----------|------------|
| <b>BD</b> | 28/03/2025 |
| <b>BW</b> | 74         |
| <b>WW</b> |            |
| <b>YW</b> |            |

**CHAROLAIS****Bar H Charolais, Grenfell SK****Lot 66-73**

Kevin &amp; Donna Haylock 306-697-8771 grenlock@sasktel.net

**66 BAR H ARROW 1N**

PMC904677

BARH 1N

Polled

LT RUSHMORE 8060  
 SPARROWS SPLENDOR 135A  
 LT AFFINITY 6221  
 BAR H STAR GAZER 102A

SPARROWS WHEATON 101J  
 BAR H ANNIE 205K

|           |            |
|-----------|------------|
| <b>BD</b> | 01/01/2025 |
| <b>BW</b> | 90(-4.0)   |
| <b>WW</b> | 750(57)    |
| <b>YW</b> | (110)      |

No footnote available

**67 BAR H PHOENIX 11N**

PMC904654

BARH 11N

Polled

WCR COMMISSIONER 593P  
 KIRLENE QUINCY XP 13F  
 KAYR VVELOCITY 812Z

KIRLENE HASHTAG 13H  
 BAR H DREAM BOAT 143H

|           |            |
|-----------|------------|
| <b>BD</b> | 14/01/2025 |
| <b>BW</b> | 105(-1.0)  |
| <b>WW</b> | 664(50)    |
| <b>YW</b> | (87)       |

Hashtag son is smooth shouldered, long bodied, moderate sized head and a nice straight top!

|    |                       |  |    |            |
|----|-----------------------|--|----|------------|
| 68 | BAR H DOMINANT 14N    | PMC904670                                | BD | 18/01/2025 |
|    | BARH 14N              | Polled                                   | BW | 104(-1.3)  |
|    | SPARROWS WHEATON 101J | LT RUSHMORE 8060                         | WW | 702(53)    |
|    | BAR H FANCY 125G      | SPARROWS SPLENDOR 135G                   | YW | (104)      |
|    |                       | LT BLUEGRASS 4017 P<br>BAR H ICICLE 228D |    |            |

Wheaton son out of a Bluegrass daughter. Lots of length and smoothness. A great disposition!

|    |                  |                                      |    |            |
|----|------------------|--------------------------------------|----|------------|
| 69 | BAR H KRUZE 15N  | PMC904663                            | BD | 20/01/2025 |
|    | BARH 15N         | Polled                               | BW | 88(-5.1)   |
|    | LT AFFINITY 6221 | LT RUSHMORE 8060                     | WW | 632(48)    |
|    | BAR H BREEZY 66F | LT ATHENA 1247                       | YW | (99)       |
|    |                  | LT SUNDANCE 2251<br>BAR H LALUN 178C |    |            |

Small headed and smooth shouldered. He is out of the calving ease sire Affinity. Use him with confidence!

|    |                     |  |    |            |
|----|---------------------|--|----|------------|
| 70 | BAR H PIRATE 26N    | PMC904691                                  | BD | 16/02/2025 |
|    | BARH 26N            | Polled                                     | BW | 97(-3.1)   |
|    | KIRLENE HASHTAG 13H | WCR COMMISSIONER 593P                      | WW | 666(61)    |
|    | BAR H AURORA 175J   | KIRLENE QUINCY XP 13F                      | YW | (108)      |
|    |                     | PLEASANT DAWN CHISUM 216A<br>BAR H ECHO 2E |    |            |

Small headed, smooth shouldered, straight top. Hashtag and Chisum in his pedigree!

|    |                     |                                       |    |            |
|----|---------------------|---------------------------------------|----|------------|
| 71 | BAR H BRONSON 29N   | PMC904694                             | BD | 19/02/2025 |
|    | BARH 29N            | Polled                                | BW | 106(-3.5)  |
|    | KIRLENE HASHTAG 13H | WCR COMMISSIONER 593P                 | WW | 572(44)    |
|    | BAR H LAVENDER 135G | KIRLENE QUINCY XP 13F                 | YW | (79)       |
|    |                     | LT DEL REY 6161<br>BAR H RED MINT 66A |    |            |

A smooth made, small headed, Hashtag son. Has a bit bigger BW but he is put together for calving ease!

|    |                    |   |    |            |
|----|--------------------|---|----|------------|
| 72 | BAR H SHOWMAN 12N  | PMC904666                                 | BD | 14/01/2025 |
|    | BARH 12N           | Polled                                    | BW | 100(-1.2)  |
|    | LT DEL REY 6161    | LT LONGNECK 3031                          | WW | 722(57)    |
|    | BAR H REBECCA 232D | LT MAXINE 7908                            | YW | (93)       |
|    |                    | KAYR VELOCITY 812Z<br>MERIT VANESSA 5117R |    |            |

No footnote available.

|    |                     |                                     |    |            |
|----|---------------------|-------------------------------------|----|------------|
| 73 | BAR H CONCORD 28N   | PMC904653                           | BD | 19/02/2025 |
|    | BARH 28N            | Polled                              | BW | 102(-2.9)  |
|    | KIRLENE HASHTAG 13H | WCR COMMISSIONER 593P               | WW | 682(59)    |
|    | BAR H EMMY 171J     | KIRLENE QUINCY XP 13F               | YW | (100)      |
|    |                     | HRJ MAVERICK 556C<br>BAR H ALI 139G |    |            |

Nice small head, deep bodied with a good temperament out of a Maverick daughter and by Hashtag!


DRD Charolais, Sintaluta SK Lot 74

Don Raitlon 306-660-7767


|    |                        |  |  |  |
|----|------------------------|--|--|--|
| 74 | DRD KING 311N          | PMC919588                                |  |  |
|    | DRD 311N               | Polled                                   |  |  |
|    | HIGH BLUFF LUCAS 119L  | HVA THREETHIEVES 66F                     |  |  |
|    | G.BROS THYME RGCG 311K | HIGH BLUFF TRIUMPH 3E                    |  |  |
|    |                        | G.BROS ARCHER 1002G<br>G.BROS ZARAH 557C |  |  |

He is an easy doing bull. Semen check showed a score of 91 and measured 39.5cm. Apr.26 weight 1364lbs

|    |            |
|----|------------|
| BD | 21/02/2025 |
| BW | 95(-0.3)   |
| WW | (55)       |
| YW | (105)      |




|                       |                             |                        |           |            |
|-----------------------|-----------------------------|------------------------|-----------|------------|
| <b>75</b>             | <b>SHIELS NASHVILLE 79N</b> | PMC925189              | <b>BD</b> | 06/02/2025 |
|                       | LSMS 79N                    | Polled                 | <b>BW</b> | 102(-0.2)  |
| LAE KARSON 2123K      |                             | BECK'S TOWER 720E      | <b>WW</b> | (64)       |
| HIGH BLUFF JOELLE 79J |                             | JSR SAPPHIRE 12D       | <b>YW</b> | (115)      |
|                       |                             | SCR TRIUMPH 2135       |           |            |
|                       |                             | HIGH BLUFF HORIZON 51E |           |            |

|                         |                           |   |  |            |           |           |           |      |           |       |  |  |
|-------------------------|---------------------------|---|--|------------|-----------|-----------|-----------|------|-----------|-------|--|--|
| <b>76</b>               | <b>SHIELS NASCAR 119N</b> | PMC925188   |  |            |           |           |           |      |           |       |  |  |
|                         | LSMS 119N                 | Polled  |  |            |           |           |           |      |           |       |  |  |
| CCC TRIED AND TRUE 8507 |                           | LT RUSHMORE 8060  |  |            |           |           |           |      |           |       |  |  |
| MCTAVISH KATREENA 119F  |                           | WC CCC SWEETHEART 6644  |  |            |           |           |           |      |           |       |  |  |
|                         |                           | WINN MANS CUERVO 4A   |  |            |           |           |           |      |           |       |  |  |
|                         |                           | RPJ KATREENA 515R   |  |            |           |           |           |      |           |       |  |  |
|                         |                           |   |  |            |           |           |           |      |           |       |  |  |
|                         |                           | <table border="1"> <tr><td><b>BD</b></td><td>20/01/2025</td></tr> <tr><td><b>BW</b></td><td>103(+1.1)</td></tr> <tr><td><b>WW</b></td><td>(66)</td></tr> <tr><td><b>YW</b></td><td>(107)</td></tr> </table> | <b>BD</b>  | 20/01/2025 | <b>BW</b> | 103(+1.1) | <b>WW</b> | (66) | <b>YW</b> | (107) |  |  |
| <b>BD</b>               | 20/01/2025                |   |  |            |           |           |           |      |           |       |  |  |
| <b>BW</b>               | 103(+1.1)                 |   |  |            |           |           |           |      |           |       |  |  |
| <b>WW</b>               | (66)                      |   |  |            |           |           |           |      |           |       |  |  |
| <b>YW</b>               | (107)                     |   |  |            |           |           |           |      |           |       |  |  |

**Rosso Charolais, Moose Jaw SK** **Lot 77-78**

Darwin 306-690-8916 or Will 306-690-8860 rosso.c@sasktel.net

|                        |                        |                       |           |            |
|------------------------|------------------------|-----------------------|-----------|------------|
| <b>77</b>              | <b>ROSSO MANAS 64M</b> | MC911070              | <b>BD</b> | 21/04/2024 |
|                        | ROS 64M                | Horned                | <b>BW</b> | (-3.6)     |
| HWY 215H               |                        | RAWES SIR T 123Y      | <b>WW</b> | (35)       |
| WHITECAP MS PATSY 248C |                        | LM MISS MCKAY 1212Y   | <b>YW</b> | (69)       |
|                        |                        | WHITECAP REVOLVER 69Y |           |            |
|                        |                        | HKS LADY PATSY 83X    |           |            |


|                        |                        |   |   |            |           |        |           |         |           |       |  |  |
|------------------------|------------------------|---|---|------------|-----------|--------|-----------|---------|-----------|-------|--|--|
| <b>78</b>              | <b>ROSSO MATEO 28M</b> | PMC910911   |   |            |           |        |           |         |           |       |  |  |
|                        | ROS 28M                | Homo Polled   |   |            |           |        |           |         |           |       |  |  |
| HWY 215H               |                        | RAWES SIR T 123Y  |  |            |           |        |           |         |           |       |  |  |
| ROSSO MS THUMBS UP 43H |                        | LM MISS MCKAY 1212Y   |   |            |           |        |           |         |           |       |  |  |
|                        |                        | C2 EMPIRE 46E   |   |            |           |        |           |         |           |       |  |  |
|                        |                        | ROSSO MS THUMBS UP 74C  |   |            |           |        |           |         |           |       |  |  |
|                        |                        |   |   |            |           |        |           |         |           |       |  |  |
|                        |                        | <table border="1"> <tr><td><b>BD</b></td><td>11/04/2024</td></tr> <tr><td><b>BW</b></td><td>(+3.3)</td></tr> <tr><td><b>WW</b></td><td>510(61)</td></tr> <tr><td><b>YW</b></td><td>(111)</td></tr> </table> | <b>BD</b>   | 11/04/2024 | <b>BW</b> | (+3.3) | <b>WW</b> | 510(61) | <b>YW</b> | (111) |  |  |
| <b>BD</b>              | 11/04/2024             |   |   |            |           |        |           |         |           |       |  |  |
| <b>BW</b>              | (+3.3)                 |   |   |            |           |        |           |         |           |       |  |  |
| <b>WW</b>              | 510(61)                |   |   |            |           |        |           |         |           |       |  |  |
| <b>YW</b>              | (111)                  |   |   |            |           |        |           |         |           |       |  |  |

# HEREFORD

**Blair Athol Farms, Arcola SK**

**Lots 79-84**

Duncan Lees 306-577-9703 or Jeff Lees 306-577-1375 jethro91@hotmail.com

|           |  |                             |  |   |           |            |           |          |           |         |           |           |  |
|-----------|--|-----------------------------|--|---|-----------|------------|-----------|----------|-----------|---------|-----------|-----------|--|
| <b>79</b> | <p><b>BLAIR-ATHOL 175L NASH 98N</b><br/>DVL 98N</p> <p>BLAIR-ATHOL 124E HOGAN 175L<br/>BLAIR-ATHOL 115J SUZETTE 147L</p> | <p>C03127743<br/>Polled</p> | <p>MCCOY 53A PATENT 124E<br/>BLAIR-ATHOL 5D PIN-UP 73H<br/>BLAIR-ATHOL 190G BRUTUS 115J<br/>BLAIR-ATHOL 60 SUZANNE</p> | <table border="1" style="margin: auto;"> <tr><td><b>BD</b></td><td>11/03/2025</td></tr> <tr><td><b>BW</b></td><td>84(+4.6)</td></tr> <tr><td><b>WW</b></td><td>742(65)</td></tr> <tr><td><b>YW</b></td><td>1195(103)</td></tr> </table> | <b>BD</b> | 11/03/2025 | <b>BW</b> | 84(+4.6) | <b>WW</b> | 742(65) | <b>YW</b> | 1195(103) |  |
| <b>BD</b> | 11/03/2025   |                             |  |   |           |            |           |          |           |         |           |           |  |
| <b>BW</b> | 84(+4.6)   |                             |  |   |           |            |           |          |           |         |           |           |  |
| <b>WW</b> | 742(65)  |                             |  |   |           |            |           |          |           |         |           |           |  |
| <b>YW</b> | 1195(103)  |                             |  |   |           |            |           |          |           |         |           |           |  |
| <b>80</b> | <p><b>BLAIR-ATHOL TTMAGIC 144N</b><br/>DVL 144N</p> <p>NJW 73S 22Z MIGHTY MAX 97B<br/>BLAIR-ATHOL 24C</p>                | <p>C03128382<br/>Polled</p> | <p>NJW 67U 28M BIG MAX 22Z<br/>NJW P606 72N DAYDREAM 73S<br/>BLAIR-ATHOL 10Y HOMERUN 24C<br/>BLAIR-ATHOL 53U</p>       | <table border="1" style="margin: auto;"> <tr><td><b>BD</b></td><td>03/04/2025</td></tr> <tr><td><b>BW</b></td><td>86(+3.0)</td></tr> <tr><td><b>WW</b></td><td>738(52)</td></tr> <tr><td><b>YW</b></td><td>1020(83)</td></tr> </table>  | <b>BD</b> | 03/04/2025 | <b>BW</b> | 86(+3.0) | <b>WW</b> | 738(52) | <b>YW</b> | 1020(83)  |  |
| <b>BD</b> | 03/04/2025   |                             |  |   |           |            |           |          |           |         |           |           |  |
| <b>BW</b> | 86(+3.0)   |                             |  |   |           |            |           |          |           |         |           |           |  |
| <b>WW</b> | 738(52)  |                             |  |   |           |            |           |          |           |         |           |           |  |
| <b>YW</b> | 1020(83)   |                             |  |   |           |            |           |          |           |         |           |           |  |
| <b>81</b> | <p><b>BLAIR-ATHOL 223F PRINCE 12N</b><br/>DVL 12N</p> <p>RU BA 11X EXCALIBER 223F<br/>BLAIR-ATHOL 27C CINDERELLA 31H</p> | <p>C03125678<br/>Polled</p> | <p>TH 71U 719T MR HEREFORD 11X<br/>RU BA 27A MO-MOOLA 233C<br/>NJW 73S 38W RIMROCK 27C<br/>ELM-LODGE ZETTA 23Z</p>     | <table border="1" style="margin: auto;"> <tr><td><b>BD</b></td><td>12/02/2025</td></tr> <tr><td><b>BW</b></td><td>85(+2.7)</td></tr> <tr><td><b>WW</b></td><td>820(51)</td></tr> <tr><td><b>YW</b></td><td>1100(74)</td></tr> </table>  | <b>BD</b> | 12/02/2025 | <b>BW</b> | 85(+2.7) | <b>WW</b> | 820(51) | <b>YW</b> | 1100(74)  |  |
| <b>BD</b> | 12/02/2025   |                             |  |   |           |            |           |          |           |         |           |           |  |
| <b>BW</b> | 85(+2.7)   |                             |  |   |           |            |           |          |           |         |           |           |  |
| <b>WW</b> | 820(51)  |                             |  |   |           |            |           |          |           |         |           |           |  |
| <b>YW</b> | 1100(74)   |                             |  |   |           |            |           |          |           |         |           |           |  |
| <b>82</b> | <p><b>BLAIR-ATHOL 254G BILLY-JO 95N</b><br/>DVL 95N</p> <p>NJW 139C RIDGE 254G<br/>BLAIR-ATHOL 10Y KAITLYN 83F</p>       | <p>C03127867<br/>Polled</p> | <p>NJW 73S 38W RIDGE 103C<br/>NJW 149Z 88X LEXY 139C<br/>NJW 73S W18 HOMETOWN 10Y<br/>ELM ULAN 21R 26U</p>             | <table border="1" style="margin: auto;"> <tr><td><b>BD</b></td><td>14/03/2025</td></tr> <tr><td><b>BW</b></td><td>84(+2.7)</td></tr> <tr><td><b>WW</b></td><td>842(57)</td></tr> <tr><td><b>YW</b></td><td>1045(87)</td></tr> </table>  | <b>BD</b> | 14/03/2025 | <b>BW</b> | 84(+2.7) | <b>WW</b> | 842(57) | <b>YW</b> | 1045(87)  |  |
| <b>BD</b> | 14/03/2025   |                             |  |   |           |            |           |          |           |         |           |           |  |
| <b>BW</b> | 84(+2.7)   |                             |  |   |           |            |           |          |           |         |           |           |  |
| <b>WW</b> | 842(57)  |                             |  |   |           |            |           |          |           |         |           |           |  |
| <b>YW</b> | 1045(87)   |                             |  |   |           |            |           |          |           |         |           |           |  |
| <b>83</b> | <p><b>BLAIR-ATHOL 2157K SANTANA 53N</b><br/>DVL 53N</p> <p>GLENLEES BNC 69C BAMBLE 82K<br/>RU BA 190G CHEETAH 3327J</p>  | <p>C03125964<br/>Polled</p> | <p>GLENLEES 7454 GAME ON 69H<br/>GLENLEES BNC 27C BROOKE 16F<br/>NJW 76S SPIRIT 190G<br/>RU BA 156 SENORITA 224F</p>   | <table border="1" style="margin: auto;"> <tr><td><b>BD</b></td><td>26/02/2025</td></tr> <tr><td><b>BW</b></td><td>94(+2.6)</td></tr> <tr><td><b>WW</b></td><td>814(63)</td></tr> <tr><td><b>YW</b></td><td>1100(105)</td></tr> </table> | <b>BD</b> | 26/02/2025 | <b>BW</b> | 94(+2.6) | <b>WW</b> | 814(63) | <b>YW</b> | 1100(105) |  |
| <b>BD</b> | 26/02/2025   |                             |  |   |           |            |           |          |           |         |           |           |  |
| <b>BW</b> | 94(+2.6)   |                             |  |   |           |            |           |          |           |         |           |           |  |
| <b>WW</b> | 814(63)  |                             |  |   |           |            |           |          |           |         |           |           |  |
| <b>YW</b> | 1100(105)  |                             |  |   |           |            |           |          |           |         |           |           |  |
| <b>84</b> | <p><b>BLAIR-ATHOL 175L KOBEE 166N</b><br/>DVL 166N</p> <p>BLAIR-ATHOL 124E HOGAN 175L<br/>RVP 2400 KEEPSAKE 36E</p>      | <p>C03128899<br/>Polled</p> | <p>MCCOY 53A PATENT 124E<br/>BLAIR-ATHOL 5D PIN-UP 73H<br/>TDP CROSSOVER 2400<br/>BOYD 867 KEEPSAKE 4003</p>           | <table border="1" style="margin: auto;"> <tr><td><b>BD</b></td><td>19/04/2025</td></tr> <tr><td><b>BW</b></td><td>90(+3.5)</td></tr> <tr><td><b>WW</b></td><td>774(58)</td></tr> <tr><td><b>YW</b></td><td>1050(96)</td></tr> </table>  | <b>BD</b> | 19/04/2025 | <b>BW</b> | 90(+3.5) | <b>WW</b> | 774(58) | <b>YW</b> | 1050(96)  |  |
| <b>BD</b> | 19/04/2025   |                             |  |   |           |            |           |          |           |         |           |           |  |
| <b>BW</b> | 90(+3.5)   |                             |  |   |           |            |           |          |           |         |           |           |  |
| <b>WW</b> | 774(58)  |                             |  |   |           |            |           |          |           |         |           |           |  |
| <b>YW</b> | 1050(96)   |                             |  |   |           |            |           |          |           |         |           |           |  |

**85**

**JAC 1K MONSOON 4M**

MJAC 4M

C03114451

Polled

PCL 183F KAISER 1K  
JAC 24C COUNTRY 8H

TH MASTERPLAN 183F  
PCL 6153 JADE 24H  
BLAIR-ATHOL 10Y HOMERUN 24C  
JAC COUNTRY 8B

This is a dark, well muscled really sound balanced made calving ease 2yr old. His dam is one of our top cows with a spectacular udder. Feel confident using him on cows or heifers!

|           |            |
|-----------|------------|
| <b>BD</b> | 11/02/2024 |
| <b>BW</b> | 70(-1.1)   |
| <b>WW</b> | 750(58)    |
| <b>YW</b> | 1100(93)   |



**86**

**JAC 1F NEOPOLD 19N**

MJAC 19N

C03126687

Polled

GLENLEES 5D HUMBOLT 1F  
JAC 8G COUNTRY 25K

HAROLDSON'S TOTEM 200Z 5D  
RVP 106A CAMEO GIRL 45C  
GHCDELEGATE 163F  
JAC 6C SHEEZ COUNTRY 8G

This is a goggle-eyed, smooth made Humbolt son that will be sure to add pigment to his calves. This bull is out of the same cow family as our 2yr old—good milking dam!

|           |            |
|-----------|------------|
| <b>BD</b> | 23/02/2025 |
| <b>BW</b> | 90(+5.0)   |
| <b>WW</b> | 680(63)    |
| <b>YW</b> | (105)      |



**LV Farms, Midale SK**

**Lot 87-88**

Logan Martinson 306-458-7170 martinson02@gmail.com

**87**

**LV GAMETIME L 83N**

LM 83N

C03125422

Polled

GLENLEES DBK 69H GAME TIME 45L  
LV REAHANNA L 56K

GLENLEES 7454 GAME ON 69H  
BNC GLENLEES 145 TAYLOR 30D  
ANL 206E BOTTOM LINE 12D  
LV REAHANNA L 52D

|           |            |
|-----------|------------|
| <b>BD</b> | 06/03/2025 |
| <b>BW</b> | 95(+6.6)   |
| <b>WW</b> | (68)       |
| <b>YW</b> | (108)      |

**88**

**LV GAMETIME L 28N**

LM 28N

C03123329

Polled

GLENLEES DBK 69H GAME TIME 45L  
LV DIXIE L 1B

GLENLEES 7454 GAME ON 69H  
BNC GLENLEES 145 TAYLOR 30D  
REMITAL-WEST CONSTRUCTOR 21X  
MEADOW-ACRES 62P DIXIE 41T

|           |            |
|-----------|------------|
| <b>BD</b> | 04/02/2025 |
| <b>BW</b> | 88(+5.1)   |
| <b>WW</b> | (63)       |
| <b>YW</b> | (103)      |

**Rocking G Land & Cattle, Gull Lake SK**

**Lots 89-92**

Warren Girodat 306-671-7979 girodat11@gmail.com

**89**

**RG 11153 ADVANCE 402M**

WAGG 402M

Horned

HH ADVANCE 1153J  
RG 7131 MANHATTAN ET 63H

CL 1 DOMINO 883F  
HH MISS ADVANCE 4325B  
CL 1 DOMINO 7131E  
H BL MARIE 704

|           |            |
|-----------|------------|
| <b>BD</b> | 12/03/2024 |
| <b>BW</b> | 95         |
| <b>WW</b> |            |
| <b>YW</b> |            |



**90****RG 202K DOMINATE 420M**

WAGG 420M

RG 308F FORTY CREEK 202K  
 RG 5511 ROCKETET 702E

SR DOMINATE 308F  
 RG 5511 PIXIE ET 707E  
 H WR SUSTAINABLE 5511  
 MH MEDORA 052

|           |            |
|-----------|------------|
| <b>BD</b> | 12/04/2024 |
| <b>BW</b> | 87         |
| <b>WW</b> |            |
| <b>YW</b> |            |

Horned

**91****RG 9515 DOMINO 422M**

WAGG 422M

HH DOMINO 9515  
 RG 6011 MEPHIS 89H

CL 1 DOMINO 7131E  
 LW 4075 MISS ADVANCE 729E  
 BR BELLE AIR 6011  
 H BL MARIE 704

|           |            |
|-----------|------------|
| <b>BD</b> | 15/04/2024 |
| <b>BW</b> | 80         |
| <b>WW</b> |            |
| <b>YW</b> |            |

Horned

**92****RG 9515 DOMINO 413M**

WAGG 413M

HH DOMINO 9515  
 CCR 6011 ADELA ET 59H

CL 1 DOMINO 7131E  
 LW 4075 MISS ADVANCE 729E  
 BR BELLE AIR 6011  
 CCR 100W ADELA ET 18B

|           |            |
|-----------|------------|
| <b>BD</b> | 28/03/2024 |
| <b>BW</b> | 87         |
| <b>WW</b> |            |
| <b>YW</b> |            |

Horned

**GELBVIEWH****Diamond Acre Farms Ltd., Swift Current SK****Lots 93-96**

Stanley Andres 306-741-0517 diamondacrefarms@gmail.com

**93****DAF NORMAN 19N**

DAF 19N

Black

CDGV190727

Polled

KHR GRIZZLY RED 39F  
 AWB TWIN VIEW NATALIE 61H

MCCA CORNHUSKER RED 524C  
 KHR 703T  
 SLC TOUCHDOWN 166W  
 AWB TWIN VIEW NATALIE 53F

|           |            |
|-----------|------------|
| <b>BD</b> | 12/01/2025 |
| <b>BW</b> | (+0.5)     |
| <b>WW</b> | 685(71)    |
| <b>YW</b> | 941(91)    |

Hetero Black, Homo Polled. Deep ribbed, excellent feet quality. Well haired. 37.5cm scrotal

**94****DAF KOKANEE 7M**

DAF 7M

Red

22

CDGV186659

Polled

BLB GOODVIEW KOKANEE 230K  
 BLB GOODVIEW WINNIE 233K

RWG EXACT COMBINATION E409  
 BLB GOODVIEW WINNIE 233K  
 BLB GOODVIEW HITCH 23H  
 BLB GOODVIEW WINNIE 28G

|           |            |
|-----------|------------|
| <b>BD</b> | 15/01/2024 |
| <b>BW</b> | 81(-2.5)   |
| <b>WW</b> | 839(56)    |
| <b>YW</b> | 966(69)    |

Red, Homo Polled, good feet. Mid-framed loads of thick hair 37.5cm scrotal

|    |                               |                        |            |                      |
|----|-------------------------------|------------------------|------------|----------------------|
| 95 | <b>DAF MAXWELL 10M</b>        |                        | CDGV186663 | <b>BD</b> 21/01/2024 |
|    | DAF 10M                       | Red                    | Polled     | <b>BW</b> 94(+0.3)   |
|    |                               | JLSL BONANZA 929G      |            | <b>WW</b> 834(65)    |
|    | AWB TWIN VIEW INITIATION 107J | AWB BIRCH'S LUSTER 88D |            | <b>YW</b> 1044(88)   |
|    | AWB TWIN VIEW UPTOWN GIRL 46G | BLB GOODVIEW PLD DRAKE |            |                      |

AWB TWIN VIEW UPTOWN GIRL 15Y

Red, Homo Polled, long, well muscled & great attitude. Dam has excellent feet & udder. Good hair coat! 39.5cm

|    |                                    |                           |            |                      |
|----|------------------------------------|---------------------------|------------|----------------------|
| 96 | <b>DAF MICKEY 15M</b>              |                           | CDGV189075 | <b>BD</b> 22/03/2024 |
|    | DAF 15M                            | Red                       | Polled     | <b>BW</b> 83(-3.5)   |
|    |                                    | JRI GUNG HO 282C51        |            | <b>WW</b> 705(51)    |
|    | DAF DAF TEDDY 2K                   | AWB TWIN VIEW ASTRID 42H  |            | <b>YW</b> 942(81)    |
|    | JLSL JLSL LEDGERWOOD MERCEDES 259K | JLSL JLSL TRUE GRIT 9164G |            |                      |

JLSL 424B

Red, Homo Polled, mid-framed, deep ribbed. Good feet. 40cm scrotal


**GPK Gelbvieh, Coronach SK** **Lots 97-106**

Pam Krusky 306-267-7462 pr.krusky@gmail.com

|    |                                |                             |            |  |
|----|--------------------------------|-----------------------------|------------|--|
| 97 | <b>GPK 199N NAPOLEON 199N</b>  |                             | CDGV192898 |  |
|    | GPK 199N                       | Red                         | Polled     |  |
|    |                                | HDG HILLSDOWN FINNEGAN 4F   |            |  |
|    | HDG HILLSDOWN HEARTBREAKER 27H | HDG LADY CONSTANCE 36C      |            |  |
|    | WGG WGG GLYNIS 7G              | WGG WGG EVENING EDITION 28E |            |  |

WGG WGG EVENING STAR


|           |            |
|-----------|------------|
| <b>BD</b> | 29/03/2025 |
| <b>BW</b> | 97(-0.5)   |
| <b>WW</b> | (62)       |
| <b>YW</b> | (89)       |



|    |                                |                           |            |  |
|----|--------------------------------|---------------------------|------------|--|
| 98 | <b>GPK 197N NAVIGATOR 197N</b> |                           | CDGV192896 |  |
|    | GPK 197N                       | Red                       | Polled     |  |
|    |                                | HDG HILLSDOWN FINNEGAN 4F |            |  |
|    | HDG HILLSDOWN HEARTBREAKER 27H | HDG LADY CONSTANCE 36C    |            |  |
|    | WGG WGG GRACIA GAL 101G        | DL JEN-TY DIGGS           |            |  |

WGG WGG CANICE 18C

|           |            |
|-----------|------------|
| <b>BD</b> | 21/03/2025 |
| <b>BW</b> | 98(+1.2)   |
| <b>WW</b> | (59)       |
| <b>YW</b> | (87)       |



**99****GPK 196N NEW YORK 196N**

CDGV192895

GPK 196N

Red

Polled

HDG HILLSDOWN HEARTBREAKER 27H  
GPK GPK JUBILEE 39J

HDG HILLSDOWN FINNEGAN 4F  
HDG LADY CONSTANCE 36C  
WGG WGG EVENING EDITION 28E  
WGG WGG FLEUR-DE-LIS 39F

|           |            |
|-----------|------------|
| <b>BD</b> | 19/03/2025 |
| <b>BW</b> | 87(-0.9)   |
| <b>WW</b> | (62)       |
| <b>YW</b> | (90)       |

**100****GPK 191N NANIMO 191N**

CDGV192890

GPK 191N

Red

Polled

GPK GPK LANDMARK 70L  
GPK 26K KELOWNA

HDG HILLSDOWN HEARTBREAKER 27H  
WGG WGG GIGGLES 80G  
WGG WGG EVENING EDITION 28E  
WGG WGG FLIRTY GERTIE 60F

|           |            |
|-----------|------------|
| <b>BD</b> | 16/03/2025 |
| <b>BW</b> | 103(+2.9)  |
| <b>WW</b> | (77)       |
| <b>YW</b> | (100)      |

**101****GPK 188N NEBRASKA 188N**

CDGV192887

GPK 188N

Red

Polled

HDG HILLSDOWN HEARTBREAKER 27H  
WGG WGG FLAIR 96F

HDG HILLSDOWN FINNEGAN 4F  
HDG LADY CONSTANCE 36C  
CK CONSTRUCTION 87C  
WGG WGG DAPHIE 59D

|           |            |
|-----------|------------|
| <b>BD</b> | 15/03/2025 |
| <b>BW</b> | 97(+0.6)   |
| <b>WW</b> | (64)       |
| <b>YW</b> | (93)       |

**102****GPK 184N NASHVILLE 184N**

CDGV192883

GPK 184N

Red

Polled

GPK GPK LANDMARK 70L  
GPK 18K KIMBALL

HDG HILLSDOWN HEARTBREAKER 27H  
WGG WGG GIGGLES 80G  
AWB TWIN VIEW CARD SHARK 91H  
GPK GPK HOLLY 60H

|           |            |
|-----------|------------|
| <b>BD</b> | 12/03/2025 |
| <b>BW</b> | 82(-0.6)   |
| <b>WW</b> | (62)       |
| <b>YW</b> | (85)       |

24



**103****GPK 181N NIRVANA 181N**

CDGV192880

GPK 181N

Red

Polled

GPK GPK LANDMARK 70L  
GPK 6K KAYLAHDG HILLSDOWN HEARTBREAKER 27H  
WGG WGG GIGGLES 80G  
WGG WGG EVENING EDITION 28E  
WGG WGG FIDELITY 28C

|           |            |
|-----------|------------|
| <b>BD</b> | 10/03/2025 |
| <b>BW</b> | 67(-3.0)   |
| <b>WW</b> | (53)       |
| <b>YW</b> | (72)       |

**104****GPK 179N NEVADA 179N**

CDGV192880

GPK 179N

Red

Polled

HDG HILLSDOWN HEARTBREAKER 27H  
WGG WGG FANFARE 114FHDG HILLSDOWN FINNEGAN 4F  
HDG LADY CONSTANCE 36C  
WGG ACACIA 64A  
WGG SHAN-GRI-LA 35S

|           |            |
|-----------|------------|
| <b>BD</b> | 09/03/2025 |
| <b>BW</b> | 100(+1.3)  |
| <b>WW</b> | (56)       |
| <b>YW</b> | (82)       |

**105****GPK 177N NIXON 177N**

CDGV192876

GPK 177N

Red

Polled

HDG HILLSDOWN HEARTBREAKER 27H  
GPK GPK HONEY 67HHDG HILLSDOWN FINNEGAN 4F  
HDG LADY CONSTANCE 36C  
CK CONSTRUCTION 87C  
WGG WGG FLORET 67F

|           |            |
|-----------|------------|
| <b>BD</b> | 08/03/2025 |
| <b>BW</b> | 85(-2.3)   |
| <b>WW</b> | (57)       |
| <b>YW</b> | (83)       |

**106****GPK 195N NIGHTSHIFT 195N**

CDGV192894

GPK 195N

Red

Polled

HDG HILLSDOWN HEARTBREAKER 27H  
GPK GPK J. LO 60JHDG HILLSDOWN FINNEGAN 4F  
HDG LADY CONSTANCE 36C  
WGG WGG EVENING EDITION 28E  
WGG WGG FLIRTY GERTIE 60F

|           |            |
|-----------|------------|
| <b>BD</b> | 19/03/2025 |
| <b>BW</b> | 87(-0.2)   |
| <b>WW</b> | (66)       |
| <b>YW</b> | (95)       |



### Terms & Conditions

- All purchases must be paid for the day of the auction and bulls will not be released until full settlement is made. Payment can be made with Cash, Cheque (with sufficient identification), Debit (make sure your limit is high enough!), or Visa/Mastercard (3% admin fee charged - check your limit!)
- All bulls are guaranteed by the consignors under the rules & regulations as set by the respective breed associations. Johnstone Auction Mart is acting as an agent only, and any warranties are to be settled between buyer and seller. An insurance agent will be on site to insure your bulls.
- All announcements from the auction block and printed day sheets take precedence over information in this catalogue, please give them your careful attention.
- The auctioneer will settle any disputes between two people claiming the same bid.
- Registration papers will be transferred to the buyer at the seller's expense. When you make settlement, please tell office staff which name you want the papers transferred to.
- Phone or confidential proxy bids can be arranged with any of the sale staff by May 25
- Delivery: There is no delivery policy at this sale, so please arrange to haul your bulls on your own unless you **pre-arrange** delivery with the consignor who's bull you plan on buying.

## Upcoming Auctions and Consignments

|                               |   |
|-------------------------------|---|
| <b>Saturday, May 9</b>        | 50+ Pairs, Bred Cows/Hfrs                   |
| <b>Saturday, May 16</b>       | Pairs, Bred Cows/Hfrs—taking bookings       |
| <b>Saturday, May 23</b>       | Church Hill Heifer Pairs—190 Red/Blk/Tan    |
| <b>Tuesday, May 26</b>        | Last Chance All-Breeds Bull Sale—100+ bulls |
| <b>Saturday, May 30</b>       | Pairs, Bred Cows/Hfrs—taking bookings       |
| <b>Sunday, May 31</b>         | Kingston Farm Sale, Craven                  |
| <b>Thursday, June 4</b>       | Regular Horse Sale                          |
| <b>Saturday, June 6</b>       | Pairs, Bred Cows/Hfrs—taking bookings       |
| <b>Sunday, June 7</b>         | BMT Farm Sale, Stony Beach                  |
| <b>Saturday, June 13</b>      | Consignment Machinery, Vehicles, Tools      |
| <b>Saturday, June 20</b>      | Regular Saturday Morning Sale               |
| <b>Saturday, June 27</b>      | Regular Saturday Morning Sale               |
| <b>Saturday, July 4</b>       | No Auction                                  |
| <b>Saturday, July 11</b>      | Regular Saturday Morning Sale               |
| <b>Saturday, July 18</b>      | Regular Saturday Morning Sale               |
| <b>Saturday, July 26</b>      | Consignment Machinery, Vehicles, Tools      |
| <b>Saturday, August 1</b>     | Regular Saturday Morning Sale               |
| <b>Thursday, August 6</b>     | Regular Horse Sale                          |
| <b>Saturday, August 8</b>     | Regular Saturday Morning Sale               |
| <b>Saturday, August 15</b>    | Sheep & Goats                               |
| <b>Saturday, August 22</b>    | Regular Saturday Morning Sale               |
| <b>Saturday, August 29</b>    | Regular Saturday Morning Sale               |
| <b>Saturday, September 5</b>  | Regular Saturday Morning Sale               |
| <b>Saturday, September 12</b> | Sheep & Goats                               |
| <b>Saturday, September 19</b> | Regular Saturday Morning Sale               |
| <b>Saturday, September 26</b> | Regular Saturday Morning Sale               |
| <b>Saturday, October 1</b>    | Fall Regular Horse Sale                     |
| <b>Saturday, October 3</b>    | Regular Saturday Morning Sale               |
| <b>Saturday, October 10</b>   | Consignment Machinery, Vehicles, Tools      |
| <b>Saturday, October 17</b>   | Sheep & Goats                               |
| <b>Saturday, October 24</b>   | Regular Saturday Morning Sale               |
| <b>Sunday, October 25</b>     | Fall Exotic Birds / Small Animals           |

**JOHNSTONE**

**A·U·C·T·I·O·N M·A·R·T**

PO Box 818, Moose Jaw SK S6H 4P5

**B B G / P R G**

|                      |  |                    |
|----------------------|--|--------------------|
| <b>CANADA</b>        |  | <b>POSTES</b>      |
| <b>POST</b>          |  | <b>CANADA</b>      |
| Addressed<br>Adressé | Postage<br>Postage   | Postage<br>Postage |
| <b>545554005</b>     |  |                    |

**RETURN POSTAGE GUARANTEED**  
**PORT DE RETOUR GARANTI**

TO: